

**Completed 28 Years**  
Holistic & Collective Approach



# GRAM SEVA TRUST

Dedicated to Health Care and Rural Development

Transparency Good Governance Simplicity Self-Discipline

28<sup>th</sup>  
ANNUAL REPORT  
2021-22

## GRAM SEVA TRUST

N. H. No. 48, Kharel, Ta. Gandevi, Dist. Navsari - 396 430  
Phone : +91 2634 246248, +91 2634 246362, +91 76980 05915  
E-Mail : gram\_seva@yahoo.com | gstkharel@yahoo.com  
Website : gramsevatruster.org | gramseva.org  
 facebook.com/Gram Seva Trust Kharel



## About the organization

### This logo symbolizes the objectives of the organization.

- The words in the outer circle are from the great Indian epic "Mahabharat", saying that "nothing is above a Human". This is also the motto of the organization.
- The triangle in the inner circle symbolizes the hands of three people and stands for community development through participation.
- The light from the lamp in the small but in the centre symbolizes the development of the weakest and poorest person of the community.

Founder trustees of the organization were inspired by Gandhian thinking and work of great men like Albert Schweitzer. They felt deeply the agony and hopelessness of poor villagers. They saw the plight of villagers and felt a need of medical services in these villages. Hence they brought like minded friends together and founded Gram Seva Trust, an organization dedicated to rural health and development.

In 1994 the trust started a 30 bedded hospital with 5 staff members in an old dilapidated building, given by another trust. As the need arose the hospital was expanded to accommodate more patients and better services. Today the hospital can accommodate 100 patients and has all basic facilities required in a rural hospital providing health services at affordable rates and sometimes free of charge to the needy from nearly 300 surrounding villages of Navsari and Dang districts.

The organization also wanted to improve health of the surrounding villages hence as and when need was identified different community projects were started in the surrounding villages with main focus on health and development of women and children. Immense efforts are put in to decrease malnutrition. Gram Seva Trust also reaches out to the tribals in deep interior villages of Vansda and Dang through satellite centers and general medical mega camps arranged every year.

The organization has also started different projects for development of villages like Self Help Group project (a micro saving and micro lending project for women), trainings for income generation activities, adolescent girl project, tutorial classes to strengthen primary education and a Child Education and Development Centre to improve standard of education in children of landless labourers.

## Vision

- Healthy, Happy, Self sufficient and Self-Empowered Rural communities.

## Mission

- Cater to the Health need of every individual in the society irrespective of caste, creed or economic status.
- Render special care to women and children of our society.
- Promote curative and preventive measures in order to improve the general well being of the society.
- Uplift social and economical status as well as rural development with scientific and rational approach.
- Create awareness for healthy qualitative life and development.



# Editorial

Hello friends and best wishes to all for completing 75 years of Independence to India!

Gram Seva is very happy to present its 28th Annual report.

This year began with some relief in the pandemic and life had started coming to normal as we resumed our work, festivals, social gatherings etc. Gram Seva had implemented Covid relief activities in community and the hospital, which were shared with you in the last report. This year we present to you different old and new, health and development activities in hospital and community like the expansion in hospital services, AAA project in Dang, Mental Health project, Mother and child health project, adolescent project, Smokeless stoves project, financial literacy project, Sangee sewing project, Sangee sanitary napkin project, Kitchen garden project, Child line services and Balance sheet in this annual report.

We are very thankful to all our well-wishers and donors for their continuous support and guidance throughout our journey and especially in trying times like the pandemic. Your support motivates us to improve and strive hard in our activities and reach the most downtrodden people to the best of our ability. Do continue with your best wishes and support.

Dt. 28-11-2022

Place: Kharel

Thank you,

Dr. Ashwin Shah,

(Managing Trustee)



# Hospital Services

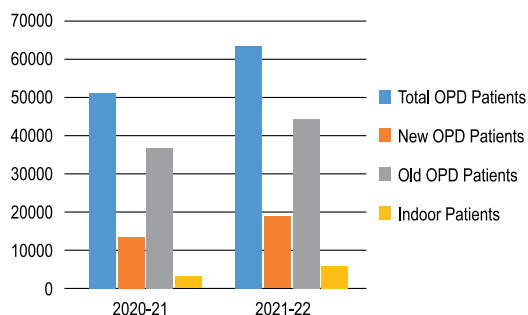


**G**ram Seva aims to fulfil the medical needs of the rural and tribal community in the surrounding villages. It is very difficult for the poor to avail the expensive medical services in the private hospitals. Hence we try to provide the community from around 300 surrounding villages, with essential medical services at low and affordable prices at our well-equipped 100 bed hospital at Kharel. Our hospital provides services in medicine, surgery, obstetrics & gynaecology, paediatrics, ophthalmology, orthopaedics, ENT, plastic surgery, dentistry, dermatology, psychiatry, nephrology, physiotherapy etc. so that patient can avail them under one roof. Hence we have also developed well-equipped laboratory, operation theatres, NICU, ICU, Dialysis unit, x-ray, sonography, ambulance and food facilities for the patients. Nearly 80% of our patients come from poor economic backgrounds. Every year thousands of patients from Gandeви, Chikhli, Vansda and Mahuwa blocks avail these services. ■

## Antenatal Care

**T**o provide rural women with quality antenatal care, we conduct free antenatal clinics thrice a week and also run 24x7 safe delivery services including caesarean services. Our team of doctors and paramedical staff work day and night, so that pregnant mothers get utmost care so that we can prevent untimely morbidities and

**Patients treated in the hospital**



**Table 1: Hospital Statistics**

| Department                          | 2021-2022      | 2020-2021      |
|-------------------------------------|----------------|----------------|
| Consult by Sp.Doctors               | 66857          | 51608          |
| Surgery                             | 2112           | 1476           |
| Delivery                            | 1157           | 1103           |
| T.B. Patient                        | 54             | 46             |
| Laboratory Invesg. / No.of Patients | 224105 / 32015 | 131654 / 21609 |
| X-Ray                               | 4609           | 3372           |
| Sonography                          | 339            | 290            |
| Physiotherapy                       | 2608           | 2033           |
| Dental                              | 1436           | 717            |
| Total Dialysis                      | 2286           | 2285           |
| Snake Bite Patients Treated         | 114            | 130            |
| Free Food Dishes                    | 56974          | 42846          |



### Lack of understanding can cost precious lives

Anitaben (name changed) 20 year old woman was pregnant for the first time. She came to Kharel hospital for regular check-ups. The baby was growing well and she had no health issues except for slightly small pelvis. When Anitaben came for her check-up in 9th month of pregnancy, the doctors felt that her cervix was opening and since she had a small pelvis, she should be kept under observation as she was primigravida and may have long and difficult delivery which may harm her and the baby. But Anitaben was not having labour pains hence her family decided to take her home and not admit her in the hospital. Their reason was that there was still some time for delivery and they did not have any help looking after the cattle if they stayed at the hospital. Even after intense counselling they refused admission and went home. Our field level health workers visited her family and counselled them. They even garnered the support of local self- help group women who agreed to take care of their cattle. But Anita and her family refused saying she did not have pains and they would go to the hospital only when her pains start. So they were advised to at least go to the nearby Government Health Centre and monitor the child's heart beats every day. But 4 days later early in the morning Anita had labour pains and she went to the health centre. There she was advised to go to higher centre as her pelvis was small and she may need expert management. But Anita's family delayed in taking the decision to transfer her to a higher centre. She was taken to higher centre at Chikhli late in the afternoon where she was delivered by late evening. Due to prolonged labour Anita's baby had difficulty in breathing and did not cry immediately. The baby needed immediate resuscitation and NICU care. The child was sent to Kharel for further NICU care on the same day. Anita also suffered from injuries to her pelvis organs. She needed stitches to manage the injuries and she also had trouble passing stools and urine. When Anita was brought to Kharel hospital her stitches had opened and she needed re-suturing. After 10 days of intense management she was discharged with the baby. Lack of understanding and delay in decisions could have cost Anita and her baby's life. We still have to monitor them regularly for any residual effects of these complications.

mortalities. This year 3725 pregnant women attended the free ANC clinics out of which 1157

deliveries were conducted. ■

## Neonatal Intensive Care Unit (NICU) services

Many new born babies need medical care due to low birth weight, prematurity, neonatal jaundice, congenital anomalies, difficult birth history etc. Neonatal intensive care services are generally available in cities and expensive, which the rural, tribal communities cannot afford.

Hence we provide NICU services at our hospital at low cost. This year 340 new born babies were admitted in the NICU out of which 313 survived (90%). These babies are followed regularly even after their discharge and care given for their optimum health and development. ■

## Dialysis Unit

Chronic kidney patients need frequent dialysis sessions, sometimes twice or thrice a week. Our dialysis unit provides dialysis treatment, medicines and investigations to such patients near their villages and at very affordable cost.

Patients having the government health insurance cards not only get free dialysis services in this centre but also get travel allowance at all sessions. This year 2286 dialysis sessions were conducted out of which 2211 were free. ■

## Eye Department

The elderly in the villages become handicapped due to loss of vision as a result of cataract. Our Sukhabhai Govindji Eye Department provides services to these villagers at affordable rates. We also conduct free eye camps every month,

where eye check-up, spectacles for near vision and cataract surgeries are done free of cost. This year 2418 patients were checked, 241 cataract surgeries done and 398 were given spectacles. ■



## 'Abhinav' District Early Intervention Centre (DEIC)

Our DEIC supported by national Health Mission and Rashtriya Bal Swasthya Karyakram (RBSK), helps those children who are less than 18 years and have some developmental disorder, congenital defects, major deficiencies or major diseases like Sick cell disease etc. A team of doctors, therapists, paramedical workers and social workers together manage these children and try to help them achieve their optimum

health and development. Various consultants in paediatric endocrinology, nephrology, cardiology, neurology etc. visit this centre and provide their services to these children. We also conduct 2 D Echo Camps to help diagnose and manage heart diseases in children in Navsari district. ■

## 'Annapurna' Bhojnalay

The patients come to the hospital from distant villages. Hence we try to provide free meals to hospitalized patients and their attendants so that they do not have to travel back and forth for their tiffin, thus saving their time, money and energy. We receive annual donations from our well-

wishers for birthdays and anniversaries for this service thus enabling us to provide wholesome meals and milk, twice a day to the patients and their attendants. This year 56974 free dishes were provided to the patients. ■

## Medical Relief

Many patients cannot avail medical services due to their poor economic status. Hence Gram Seva provides medical services at our hospital at Kharel at very affordable rates. In spite of which many patients cannot afford these services. So we started providing medical relief to poor patients (OPD and Indoor) to help them complete their treatment. We also dispense free medicines to all OPD patients, thus further decreasing their burden. Our medical store also dispenses medicines on 'no profit no loss' basis to lower their prices substantially from their maximum retail prices. This year we have given relief to 49.87% patients amounting to

Rs.3,53,05,957/- Medicines of Rs. 12,95,836/- were dispensed free of charges. ■

**Table 3: Abhinav District Early Intervention Centre**

| Disorders                | Total   |         |
|--------------------------|---------|---------|
| Year                     | 2020-21 | 2021-22 |
| Congenital Defects       | 88      | 835     |
| Nutritional Deficiencies | 61      | 196     |
| Developmental Disorder   | 91      | 578     |
| Diseases                 | 55      | 728     |
| Total                    | 295     | 2337    |

**Table 2: Eye Department**

| Camp Details                | Donors/ Support   |
|-----------------------------|---|
| Total camps: 10             | ● Well- wisher and Philanthropist Zoroastrian Lady  |
| Total Patients: 2418        | ● In memory of Late Mr. Dhirubhai Zinabhai Naik and Late Mrs. Kantaben Dhirubhai Naik (Kachholi), Late Mr.Daulatbhai Nathubhai Desai (Waghaldhara) by Shri Bharatbhai Dhirubhai Naik (Valsad) |
| Total Surgeries: 241        | ● Shri Samast Leuva Patidar Samaj Trust, Navsari  |
| Total Spectacles given: 398 | ● Niko, Layla, Jay, Sumeru Naik and Family Devdha (U.S.A.)  |
|                             | ● In memory of Late Mr. Chotubhai Jivanji Patel, Late Mrs. Maniben Chotubhai Patel and Late Mr. Arvindbhai C. Patel by Ms.Sudhaben, Ms.Gitaben and Ms.Meenaben, Haripura, Bardoli (U.K.)      |
|                             | ● Drishti, District Blindness Control Program, Navsari  |

## Satellite centres



Gram Seva runs three satellite centres in tribal areas of Dang and Vansda. The main objective is to provide primary medical services every week to the patients of interior forest areas so that they do not have to travel hundreds of kilometres for minor ailments. Patients with major

health problems are brought to our hospital at Kharel for further management. This year our team of doctors and paramedical staff did 135 visits to these centres and treated 2094 patients out of which 161 were brought to Kharel and managed. ■

## Mega General Medical and Surgery Camps

Many patients are deprived of medical services due to their poor economic conditions. We conduct free medical camps every year to help

such patients in interior villages. This year two such camps were conducted at village Chondha (Vansda block) and Shamgahan (Dang). Our team

**Table 4: Satellite Centers**

| Particulars      | 2020-2021 |            |                              | 2021-22 |            |        |
|------------------|-----------|------------|------------------------------|---------|------------|--------|
|                  | Kudkas    | Shivarimal | Bhinar(January 2021 onwards) | Kudkas  | Shivarimal | Bhinar |
| Total Visits     | 42        | 42         | 12                           | 46      | 45         | 44     |
| General Patients | 1665      | 764        | 77                           | 2162    | 1055       | 493    |
| Women            | 243       | 63         | 37                           | 248     | 148        | 65     |
| Children         | 161       | 122        | 131                          | 162     | 329        | 432    |
| Total Patients   | 2069      | 949        | 245                          | 2572    | 1532       | 990    |

**Table 5: General Medical Camps in Satellite Area**

| Date       | Venue   | No. of Beneficiaries | Donors  |
|------------|---|----------------------|---|
| 26/12/2021 | Riddhi Siddhi Adarsh Gam Vikas Mandal and Sai Yuva Dhan Sankul, Chondha | 585                  | In memory of Late Mr. Morarbhay Premabhay Mistry by Mrs. Shantaben Morarbhay Mistry and Mr. Rohit Mistry (Canada) |
| 27/02/2022 | Saint Xavier's School, Shamgahan, Dang district                         | 1138                 | Shri Dineshbhai C. Shah and Smt. Naynaben Shah Chicago, USA   |



of doctors from all fields, paramedical staff and field staff visit the camp site, screen patients and those patients requiring further management and

surgeries are brought to Kharel Hospital. Patients coming in the camp are not charged for any hospital services. ■

### Rewarding efforts

*Yogesh (name changed) was 5 year old boy living in a village near Kharel with his parents and grand- parents who were farm labourers. One day while playing with his friend near his home, wall of a cattle shed collapsed on him and he suffered leg injuries. Yogesh's parents had imbibed alcohol and were not in the state to take him for medical help. His grandparents brought him to Kharel hospital. Yogesh had fracture in his leg and needed surgery. His grandparents did not have enough money and they decided to take him back home. Seeing their condition the hospital decided not to take any charges for his surgery. But on the day of the operation Yogesh's parents came and fought with his grandparents and took him back home. Our field level health workers then continuously visited his parents and counselled. One day they took a vehicle and went to his home early in the morning when his parents were sober and had not taken alcohol. They convinced them to bring Yogesh for his surgery. This time his parents agreed and Yogesh was brought to Kharel hospital, accompanied by his mother and grandmother. He was operated for his fracture and a rod was inserted in his leg. They were not charged for the surgery. Today Yogesh is doing well. Thus the efforts of our health workers were fruitful and a child was saved from life-long deformity and disability.*

### Timely help saves a youth

*Jayeshbhai (name changed) aged 22 years was sleeping in his home when early in the morning he felt some pain in his left hand. After some time he suffered from vomiting and blackouts. His family immediately took him to a private practitioner where he was asked to go to Kharel hospital for treatment. But on their way his condition deteriorated. So they went to a government health centre on the way. After preliminary treatment there he was transferred to Kharel hospital. When he was brought to Kharel hospital, Jayesh could not open his eyes, there was frothing from his mouth and he had difficulty in breathing. On examination there were fang marks on his left hand. His symptoms were similar to bite by a Krait. These snakes generally bite at night and they affect the respiratory system. Such patients generally need ventilator treatment so they should be shifted to hospitals without delay. Jayesh was lucky that he was brought to a hospital immediately. He was given 10 anti-snake venom injections and kept in ICU. During his treatment he suffered from respiratory distress and was put on ventilator. He was given another 12 vials of anti-snake venom. Slowly his condition improved and he was weaned from the ventilator. After few days he was discharged. Thus timely medical help saved the life of a young man.*



*I slept and dreamt that life was joy,  
I woke and saw that life was service,  
I acted and behold service was joy  
- Rabindranath Tagore*

# Community Health



Gram Seva believes in not only treating patients but also in preventing their illnesses. Hence along with hospital services we also conduct community outreach health projects to increase awareness

about prevention of diseases, promote healthy living and conduct early screening and treatment of illnesses. We try to reach the different sections of the community to cater to their health needs

## Child Health and Nutrition Project

Malnutrition, which is rampant in children in the community, is the leading cause of morbidity, mortality and poor development. We have adopted 100 anganwadis (child care centres) in surrounding 22 villages. Our main focus is screening children for malnutrition, their management and increase awareness in community. Our field workers conduct home visits

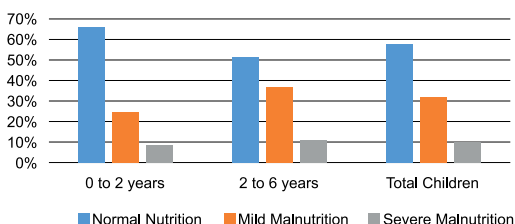
for follow up and also counsel parents regarding child care and nutrition. Every year more than 2500 children are enrolled under this project. But for last two years the number of children enrolled and coming for check-up has decreased due to the pandemic. Malnutrition in children has also increased during the pandemic.

## Antenatal Care Project

Every year the pregnant women in the community are registered, counselled and

followed till their safe delivery. They are given free antenatal services in our hospital. High risk pregnant women are also identified and given special attention. This helps us in preventing maternal and neonatal mortality. We also conduct health education sessions in community regarding antenatal care at home, importance of check-ups, nutrition, safe deliveries, post natal care of mothers, new born care, breast feeding, danger signs etc. This year 872 pregnant women were followed out of which 631 women delivered.

Children checked under Child Health and Nutrition Project



**Correct Diagnosis Saves Life of a young girl**

*11 years old Pinal (name changed), child of farm labourers, staying with her aunt in near Navsari. She was suffering from frequent fever so her aunty took her to different private practitioners in Navsari. A doctor asked them to admit Pinal in hospital as she needed further investigations and management. Her parents could not afford the hospital expenses so they decided not to admit her there but bring her to Kharel hospital. When Pinal was brought to Kharel hospital, she was very thin, weak and anaemic. She complained of fever and pain in abdomen. On investigation she was diagnosed with Tuberculosis. She was kept in ICU as the TB had affected her nervous system by now. She was started with medicines for TB. After 25 days of intensive care she was discharged. Today Pinal is taking her TB medicines for the government health centre. Comes for regular follow up. She is also given high calorie high protein powders and her health is improving.*

**Adolescent Health Project**

As we all know how adolescence brings with it physical, mental and emotional changes. Adolescents are overwhelmed with these changes. They are confused and need support, scientific information and guidance. We conduct regular health education sessions for adolescent

girls and boys in the community. Adolescent changes, nutrition, addictions, health and hygiene are discussed during these sessions. They are also screened for anaemia and malnutrition. Workshops are also conducted in schools. ■

**Geriatric Project**

Increase in longevity, stress and change in lifestyle has increased the number of people suffering from chronic diseases like Hypertension, diabetes etc. We screen people, aged 50 years and above, for these diseases, counsel them regarding management and follow them for

compliance. Their families are also counselled with them, about lifestyle changes, importance of regular follow up and medications. This helps in not only improving their compliance, which has increased to 90% but also improve their health and decrease complications. ■

**Mental Health Project**

Mental illness is considered a stigma in the society and hence people do not disclose such conditions and refrain from seeking medical help. Present social and economic environment, covid pandemic, competitions, stress etc. have increased mental strain and more and more people are suffering from mental illness. We started mental health project in 18 villages to increase awareness in community and help in the management of patients. Door to door screening is being conducted to find mentally ill patients and their families are counselled regarding their

management. Patients are followed regularly to motivate them and their families to improve their compliance and also help rehabilitate them socially. Out of 58 patients found during screening, 14 have not yet started their medicines. Efforts are being made to help them and their families understand the need for medical help. ■

**Table 6: Adolescent Health Education Project**

| Sr. | Particulars                     | Adolescent girls | Adolescent boys | Total |
|-----|---------------------------------|------------------|-----------------|-------|
| 1   | Total Health education sessions | 531              | 54              | 585   |
| 2   | Attendance                      | 2049             | 695             | 2744  |

**Table 7: Geriatric Project**

| Sr.No | Particulars                     | Number | Percent |
|-------|---------------------------------|--------|---------|
| 1     | Total Patients                  | 2902   |         |
| 2     | Hypertension Patients           | 2215   | 76.33   |
| 3     | Diabetes Patients               | 904    | 31.15   |
| 4     | Total Cataract patients         | 459    | 15.82   |
| 5     | Others (Asthma, Arthritis etc.) | 589    | 22.09   |
| 6     | Health Education Sessions       | 267    |         |



## Health Awareness

It is our strong belief that majority of health problems will decrease or can be controlled by increasing knowledge of community. Efforts are being made to increase health awareness in the community by arranging various health education sessions in the hospital and community, for

adolescents, pregnant women, lactating mothers, geriatric patients and other villagers. Audio visual aids and health materials like posters, videos, flip charts, case studies, handbills, brochures etc. are being used to help disseminate health messages in community. ■

## 'Adivasi Arogya sambhal ane Aarthik vikas' (AAA) Project (Tribal Health and Livelihood Project)

Dang district on the eastern border of Gujarat is a hilly, forest, tribal area. Due to its difficult terrain the villages have poor health, transport and communication facilities. We have adopted 25 villages in Waghai block of Dang district, to help increase health services and livelihood opportunities. Village level workers are trained in health and awareness activities. Mobile clinics are conducted in villages by our team of

doctors and paramedical staff. Health awareness activities are conducted by village workers through meetings and follow up visits. Efforts are being made to improve access to health services and follow up, through mobile app technology. Menstrual hygiene awareness is also promoted in young women and increased access to low cost, environmental friendly sanitary products. ■

**Table 8: Mental Health Project**

| Sr. No | Particulars                            | Numbers     |
|--------|--|-------------|
| 1      | Total homes screened                   | 230         |
| 2      | Total mentally ill patients identified | 58          |
| 3      | Age range                              | 18-73 years |
| 4      | Patients not taking medicines          | 14          |
| 5      | No. of Patients have some Improvement  | 30          |

**Table 9: Health Awareness**

| Sr.No | Particulars                                      | Number |
|-------|--|--------|
| 1     | Health education (HE) sessions in hospital wards | 296    |
| 2     | HE in Antenatal Clinic                           | 145    |
| 3     | HE in Post Natal Clinic                          | 45     |
| 4     | Night HE in Hospital                             | 69     |
| 5     | HE in Eye Camp                                   | 9      |

**Table 10: AAA Project**

| Sr. No | Indicator   | Total |
|--------|---|-------|
| 1      | Total Mobile OPD sessions held                                | 28    |
| 2      | Total beneficiaries of Mobile OPD of AAA, Dang                | 3936  |
| 3      | Average beneficiaries per OPD day                             | 140   |
| 4      | Total patients checked (6 years onwards)                      | 2649  |
| 5      | Total children checked (0 to 5 years)                         | 1287  |
| 6      | Total beneficiaries referred to other centres from Mobile OPD | 627   |
| 7      | Total beneficiaries reached to other centres                  | 121   |
| 8      | Total village level meetings conducted                        | 158   |
| 9      | Total villagers attended village level meetings               | 1355  |

*We can do anything we want to, if we stick to it long enough - Helen Keller*



# Rural Development



Gram Seva aims towards rural development through individual development and the development of their families. It is our firm belief that no community development is complete without the development of the women and children in that community. Hence we have started

projects to cater to the economic development of women and educational development of children. We feel that economic development of women also leads to development in other sectors like health. ■

## Women's Empowerment

### Skill development programs

For women to become economically independent, we need to continuously support them and conduct different skill development programs for their development. Gram Seva has been arranging such programs throughout this year for the benefit of village women.

#### 'Sewing class in my village'

This year Gram Seva started three months mobile sewing classes in different villages so that women learn sewing skills and earn their living. Our objective is that women in one village learn sewing and then the class is transferred to another village. These sewing classes received enthusiastic response not only from the women in the villages but from the whole community. Women in the villages were happy as the classes were conducted in the village and it saved both their travelling time and fare. About 101 women in Navsari and Dang district learnt sewing in these classes this year.

### Financial Literacy Workshops

As women are becoming economically independent, it is imperative that they know the basics of finance, accounts and banking procedures. A study in India showed that 75% of the people are unaware about finance and accounting. Hence to empower people, especially women with the knowledge of income, expenses, savings, loans, banking, insurance etc. we have started conducting financial literacy workshops in villages. Games, videos, charts etc. are used to make the workshop lively and lucid. Desai Foundation, U.S.A has supported these workshops financially and this year, we have conducted 12 workshops in which 232 women participated.

### Jewellery Making Workshops

We also trained 39 women in making jewellery like ear rings, necklaces, bangles, anklets etc. The main objective was to develop art and craft in women and enable them to use these skills to earn some livelihood. Desai Foundation U.S.A also supported



these workshops financially. After the workshop, these products were exhibited for sale. Women earned about Rs.7215 in this sale. We also encourage

our sangee depot holders to sell these products in village thus boosting the confidence of women.

## Livelihood projects

The ultimate aim of our skill development programs is that women earn some livelihood by using their skills. Women need support in advertising and marketing of their products. Gram Seva supports these women by helping them buy raw materials, monitoring the quality of production and support in marketing. ■

### Roshni-Sangee centre for Handicrafts and household products

Women who have learnt sewing are engaged to make handicrafts and household products, which are then marketed through retail shop in the campus, stalls in fairs, annual exhibition etc. Uniforms, caps, cotton

masks, new born baby clothes, and other clothes required in the hospital are also made by these women, thus helping them in income generation. This year women sold Rs. 382999/- worth products.

### Sangee Sanitary Napkin Project

The reach of sangee sanitary napkins is increasing every year. Women not only get low cost, environmental friendly sanitary napkins near their homes, but also earn livelihood by their production and sale. This year 52000 packets of sanitary napkins were sold in Navsari and Dang, thus earning Rs.3,25,593. A total of 233 women are involved in this project.

## Other Projects for women

### Kitchen Garden Project

Women are encouraged to develop kitchen gardens around their homes, especially with iron rich vegetables. This helps improve the nutrition status of their families and at the same time helps save expenses of buying vegetables. Some also earn money by sale of vegetables. 92 women were given good quality seeds at low cost. About 800 kgs. of vegetables were grown by women this season.

### Smokeless Stove Project

The traditional mud stoves are still used in the villages. These stoves use wood as fuel and contribute to global warming by 2%. Moreover they are also the cause of deaths of 40 lakh people every

year due to their smoke and pollution. Hence Gram Seva decided to generate awareness in the villages regarding the harmful effects of traditional stoves and distribute green stoves, which function with improved technique. Nearly 60% less wood is required by these stoves and they produce 70% less smoke. Women are happy as their cooking time has also decreased by using these stoves. The stoves are expensive but with the support of Greenway, Vadodara and other donors, we have been able to distribute 720 stoves at very subsidized rates. The overwhelming response by villagers in Navsari and Dang has encouraged us to expand this project widely in coming years. Women who distribute the stove and monitor its use also earned Rs.1,14,500/-

## Child Development Projects

Gram Seva conducts different child development activities in surrounding villages. Due to covid lock-down activities like Parodh Balawas, summer camps, career counselling, tutorials etc. were affected and many had to be closed for an uncertain period. ■

### Parodh Balawas (Child Education and Development Centre)

Parodh Balawas was started for tribal children, whose parents migrate to brick factories, salt pans and construction of roadways. Earlier children would accompany their parents and were thus deprived from



formal education opportunities. At Parodh Balawas, such children are provided free hostel and education facilities throughout the year, ensuring they continue their education even when their parents migrate for work. During the Covid 19 pandemic schools were shut down and hence we had to send the children home as per the government guidelines for Covid lockdown. We tried to help with their education by visiting them regularly and revising their lessons. We also provided food kits to their families as their parents also lost their wages due to lock-down. Last year schools had started but intermittently. Hence for two years we did not enrol any new child in Parodh Balawas. 66 children studying from std. 3 to 9 came

back for their education after schools reopened.

### **Pustak Parab**

Gram Seva started a free weekly Library for children on Sundays. The main objective was that children develop the habit of reading. But we observed that village children were not interested in reading books hence we started organising different activities for children along with library to motivate them to visit the library. About 15 such sessions were organized in which about 402 children participated. This activity was stopped due to covid pandemic. We hope that this year we are able to start our library again.

## **Other activities of the organization**

### **Blood Donation Camp**

Patients in the hospital need blood frequently, especially for pregnant women with difficult labour, accident patients and those suffering from sickle cell disease. Hence with the support of Red Cross Blood Bank, we organized a blood donation camp. 21 bottles of blood were donated by our staff.

### **2D Echo Camp**

Screening patients for heart disease is done by cardiologists using 2D Echo machines. Dr. Snehal Kulkarni and Dr. Ritesh Sukharamwala render honorary services every year and screen and manage heart patients coming to the hospital. This year 5 such heart camps were organized and 405 patients were checked by them.

### **World Mental Health Day Celebrations**

We celebrated World Mental Health Day by organizing a workshop on Need of Community Mental Health Services for our field workers in joint collaboration with Gandhighar, Kachholi. Dr. Ashwin Shah spoke with the participants on need and different aspects of community mental health program. Dr. Jitendra Nanavala (Psychiatrist) spoke on screening and identification of patients with different types of mental illnesses, in community.

### **Food Kits Distribution**

Many families in the community are impoverished and unable to have two meals a day due to old age, ill health or widowhood. We decided to distribute food kits to these families. 125 food kits containing grains, pulses, oil, condiments etc. were distributed.

### **New Facilities and Equipment**

As the hospital services increase, more facilities and equipment are needed for the convenience of patients and staff. Following new hospital facilities were started or renovated and equipment installed this year with the help of donations by our well-wishers.

1. A new Dialysis unit and general ward were added to the present complex
2. A new FORCE ambulance with bigger capacity was bought to transfer patients to higher centres or for investigations like CT scan, MRI etc.
3. Hospital and Parodh Balawas premises were equipped with new Fire Safety System
4. A new washing machine and dryer system was installed in the hospital to help in the laundry of hospital and patient's clothes
5. An elevator will be shortly installed in



the hospital to facilitate easy transfer of patients.

6. Solar Electricity panels were installed in Parodh Balawas to minimize the electricity expenses.

### Fire Safety Drill for Staff

A new fire safety system was installed in Hospital and Parodh Balawas premises. The staff on both the premises was given training and mock drill of the use of fire safety system.

### Other Training

During covid 19 pandemic the field staff was given regular training regarding covid infection, its prevention and management. They were trained to follow patients at home, check their oxygen levels, temperatures, respiratory rate etc. and identify high risk patients and refer them immediately. They were also trained in screening patients for hypertension, diabetes, anaemia and malnutrition.

### Joined our Team

Dr. Melanie Kapadia has joined us as visiting ENT consultant. She will be rendering ENT services in the hospital, every Tuesday.

### Felicitation

The organization was awarded the Shri Manbhai Bhatt Memorial Civil Award (21-22) organized by Manav Jyot Public Charitable Trust, Mumbai, for being one of the 75 respectable organizations that are helping the state towards good governance.

### Tribute

Gram Seva pays tribute to Shri Moghabhai Naik, former trustee, Shri H.B.Varia (Retd. IAS officer, Gandhinagar), Shri Kantibhai Desai (Gandhian and Educationist, Navsari), Shri Mahadevbhai Desai (Architect and Educationist, Navsari) and Shri Paragjibhai Patel (Donor and well-wisher, U.S.A.) our pillars of support, whom we lost this year. Gram Seva pays homage to them and stands with their families in their loss.

## Acknowledgement

We heartily acknowledge and thank all for their help and support and we take this opportunity to express our heartfelt gratitude.

- All the well- wishers and donors in India and abroad who support us in achieving our objectives.
- Unified Healthcare for the Rural Underserved (UHRU), U.S.A for their monetary support for Mental Health Project and AAA Project, Dang
- Financial Literacy Workshop, monetary support, Desai Foundation (U.S.A.) for their monetary support for the Women's Health Project.
- Manav Kalyan Trust and Ganga Hansji Foundation for supporting the Shabri Women's Development Centre and Shri Arvindbhai and Blind school Shivarimal team for their whole hearted support in all our activities
- All Donors who generously for their monetary donations or in kind, for the covid relief activities of the organization.
- Donors of Gram Seva Foundation (U.S.A.) and Dr. Khushroo Patel and Shri Dineshbhai Shah and family for their active support.
- Shri P.J.Desai Trust and other donors for the poor patient relief fund
- Mr and Mrs. Angela and Virendra Patel (U.S.A.), Mr. and Mrs. Manjula and Mahendra C. Desai (U.S.A.), Mrs. Sumitraben Balwantrai Desai (India) for a general ward for paediatric patients
- Mr and Mrs. Nikita and Sanjay Shah (U.S.A.), Mr. and Mrs. Jessica and Mayur Shah(U.S.A.) for helping us setup a well- equipped Dialysis Unit
- Mrs. Naynaben Dineshbhai Shah (U.S.A.) for elevator
- Mrs & Mr Manjulaben and Mahendrabhai C. Desai (U.S.A.) and Mrs. Rekhaben Arvindbhai Shah (U.S.A.) for ambulance.
- Mr. Rohitbhai Mistry, Kumbhar falia (at present Canada) for installing the fire safety system



- Childline Foundation India and Administrative Department, Navsari, District for their support in Childline Project.
- Dr. Snehal Kulkarni and Dr. Ritesh Sukharamwala (Surat) for their voluntary services for our cardiac patients.
- Rotary Eye Institute for regular services to our Eye department
- Tejas Hospital, Mandvi for the screening and management of eye problems in neonates
- L&T, Hazira CSR team for Anti snake venom vials
- National Health Mission and RBSK team, Navsari for their support to DEIC services
- Credibility Alliance for evaluation of the organization.
- Great Place to Work for evaluation of staff in the organization
- Shri D.D.Desai and Associates, Valsad for their services in Accounts and Audit.
- Blood Donors and Blood Banks of Bilimora, Chikhli and Red Cross, Navsari.
- Other organizations like Gandevi Sugar factory, Jalaram Mandir Trust( Kaliawadi) , Shukleshwar Trust ( Anaval), Andheshwar Trust (Amalsad), Rotary Club Gandevi & Navsari, Leuva Patidar Samaj Trust (Navsari), Manav Kalyan Trust (Navsari), Lions Club of Udhna, Hari Om Friends Charitable Trust (Surat) and Anam Prem, (Mumbai) for their continuous support to our activities
- State Health Dept. Gandhinagar for their continuous support and motivation.
- District Collector and District Development Officer, staff of Officers and District Health Department, Asst. Charity Commissioner and Staff, DRDA, (Navsari District), District Police Dept, KVK and Agriculture University, Navsari, 108 Emergency ambulance service for their support to all our projects.
- Mamlatdars, Taluka Development officers, Block health Officers, Child Development Project Officers, Primary Education Officers, Medical officers in PHCs and their staff in Chikhli, Vansda, Gandevi and Mahuva blocks, for their support.
- District Health Authorities Dang and Block Health dept, Waghai and Staff of three PHCs of Waghai viz. Sakarpatal, Zavda and Kalibel.
- Elected Members of Legislative Assemblies, and Members of District Panchayat, Taluka Panchayat and Gram Panchayat for their support
- Dena Bank-Kharel, Bank of Baroda- Khadsupa, Axis Bank –Navsari, State Bank of India, Lunsikui Branch, Gujarat Viduyat Company- Gandevi, Telephone Exchange Gandevi , Kharel Post Office, Kharel Out Post, Police Station, Gandevi, Kharel Coperative Society, High Schools of Kharel and Tankal, Gandeva ITI, and Primary School of Khaparia, Toll Booth Staff, Boriach for their continued interest and participation in our activities.
- The editors and the correspondents of various newspapers of South Gujarat for covering the activities of the Trust and dissemination of information to the community.
- Donors of our mega health camps and eye camps
- St. Xaviers School Shamgahaan, Dang and Riddhi Siddhi Adarsh Gam Vikas Mandal and Sai Yuva Dhan Sankul, Chondha for their support to our mega camps
- Our trustees, full-time and visiting doctors, consultants, our dedicated staff and volunteers without whom we could not achieve anything. Also all doctors giving their services in our medical camps.
- All donors and supporters who came forward with their help during Covid Pandemic
- All known and unknown persons for supporting the organization.

*Only from the heart can you touch the sky*  
- Rumi



## Different Activities and Events by the organization

| Sr. No | Date          | Activity   | Venue                     | Participants  |
|--------|---------------|--|---------------------------|---|
| 1      | 06/05/2021    | Mockdrill for fire safety by Gandevi Police Department   | Kharel campus             | GST Staff   |
| 2      | 15/08/2021    | Independence Day Celebration:<br>Flag hosting by Mrs. Rashmiben K Desai, Navsari   | Kharel                    | GST Staff   |
| 3      | 26/08/2021    | Launch of Shabri Project- Sewing Class and Sanitary pads by Shri D. T. Desai, President, Manav Kalyan Trust  | Shivarimal                | Beneficiaries and community leaders                           |
| 4      | 01/09/2021    | Inauguration of Sewing class<br>Guest: Mr. Vikram Parekh.  | Baroliya                  | Beneficiaries and community leaders                           |
| 5      | 01/09/2021    | Inauguration of Sewing class<br>Guest: Mr. Dinubhai R Patel.   | Kharel                    | Beneficiaries and community leaders                           |
| 6      | 10-12/09/2021 | Life camp by OASIS team:<br>Resource persons : Meghaben, Dhruvinbhai, Nurulbhai, Navsari   | Parodh                    | 26 Children<br>(7th – 12th Std.)                              |
| 7      | 15/10/2021    | Exhibition and sale of jewellery and Diwali handicrafts prepared by women  | Parodh campus             | 39 women of surrounding villages                              |
| 8      | 16/10/2021    | World Mental Health Day<br>Partner: Gandhighar, Khacholi<br>Guests: Shri Anilbhai Naik, Deputy Secretary, Gandhighar, Khacholi<br>Key note speakers: Dr. Ashwin Shah & Dr. Jitendra Nanawala, Psychiatrist, Khacholi | Kharel                    | Community Health field staff and Childline staff              |
| 9      | 02/11/2021    | Rangoli Competition<br>Judge: Mr. Kishorbhai Nayak, Dr. Nimesh Nayak   | Kharel                    | GST Staff   |
| 10     | 21/11/2021    | Felicitation of Gram Seva Trust by Manav Jyot Public Charitable Trust, Mumbai  | Bhavnagar                 | Dr. Mihir Dave<br>Mr. Kamleshbhai Naik<br>Mr. Umeshbhai Patel |
| 11     | 14/12/2021    | Exposure visit to Garment department, Seva Rural campus  | Zagadia                   | 25 women of Baroliya Sewing class                             |
| 12     | 11/01/2022    | COVID-19 booster dose vaccination for staff  | Kharel                    | 114 GST Staff   |
| 13     | 26/01/2022    | Republic Day Celebration: Chief Guest: Jitendrabhai Mehta (USA) Gandeve, Founder of UHRU   | Kharel                    | GST Staff   |
| 14     | 01/03/2022    | Exhibition and stall at Sukhleshwar temple trust fair  | Anaval                    | Staff of Roshni – Sangee centre                               |
| 15     | 01/03/2021    | Inauguration of Sewing class<br>Guest: Mr. Dinubhai Patel  | Panchayat Bhavan, Bodwank | Beneficiaries and community leaders                           |
| 16     | 05/03/2022    | Inauguration of Dialysis Unit and Paediatric Ward and Nursing Station. Guest: Dr. Khushroo Patel (USA), Mr.Dineshbhai Shah (USA) and Mr.Babubhai Naik (Dhanori)  | Kharel                    | Invited guests, Trustees and GST Staff                        |



## Trainings and Lectures Given by GST

| Sr. No | Date          | Activity   | Venue       | Resource Person  |
|--------|---------------|--|-------------|--|
| 1      | 02-06/09/2021 | Financial literacy Workshop Participants : 30 SHG members  | Kangwai     | Dr. Mihir Dave<br>Mrs. Priyanka Patel                        |
| 2      | 28-30/09/2021 | Financial literacy Workshop Participants : 21 SHG members  | Baroliya    | Dr. Mihir Dave<br>Mrs. Priyanka Patel                        |
| 3      | 11-15/10/2021 | Workshop for 39 women from surrounding villages on jewellery making and handicraft painting                            | Parodh      | Smt. Vaishaliben Gohil                                       |
| 4      | 26/10/2021    | Virtual Mental Health orientation for BAIF Staff, Self Help Group Staff, Kaprada                                       | Kharel      | Dr. Sharmishtha Patil,                                       |
| 5      | 16/11/2021    | Virtual Mental Health Orientation – Self help group women ,BAIF, Kaprada   | Kharel      | Dr. Sharmishtha Patil  |
| 6      | 11/12/2021    | Virtual Mental Health Orientation – Self help group women ,BAIF, Kaprada   | Kharel      | Dr. Sharmishtha Patil  |
| 7      | 17/02/2022    | Financial literacy Workshop Participants : SHG members   | Dang        | Dr. Mihir Dave   |
| 8      | 08/03/2022    | Training for 31 women about Financial Literacy and Child helpline on occasion of International Women's Day             | ITI Gandeva | Dr. H. A. Shah   |
| 9      | 10/03/2022    | Training for 65 women from surrounding villages about Financial Literacy and Child helpline on occasion of Women's Day | ITI Khergam | Mrs. Priyanka Patel<br>Mrs. Rekha Patel<br>Ms. Neha Vimawala |

## External Trainings attended by GST staff

| Sr. No | Date                                  | Activity   | Venue                                  | Attendees   |
|--------|---------------------------------------|--|--|---|
| 1      | 18-22/07/2021                         | Leadership Workshop by Oasis Movement  | Chanod                                 | Dr. Sharmishtha Patil<br>Dr. Mihir Dave   |
| 2      | 18/09/2021                            | Virtual training from Gandhinagar for SNCU staff   | Kharel                                 | Dr. Neha Patel,<br>Ms. Leena Patel<br>Mrs. Nimisha Patel                                  |
| 3      | 18, 25 & 28/09/21,<br>2, 9 & 12/10/21 | Development sessions for staff member. Sessions conducted by Ms. Niddhi Desai              | Kharel                                 | GST Staff   |
| 4      | 11/10/21 to<br>24/12/21               | 12 virtual sessions on Good Governance for NGOs, organized by Dhvani Foundation, Bengaluru | Kharel                                 | Dr. Sharmishtha Patil<br>Dr. Kanchan Dhadve<br>Dr. Mihir Dave                             |
| 5      | 25/10/2021 -<br>30/10/2021            | Training for DEIC staff  | Shrimad Rajchandra Hospital, Dharampur | Dr. Hiral Dave, Dr. Bhumi Nayak, Ms. Farheen Norgat, Mrs. Nimisha Patel, Mrs. Aarti Patel |
| 6      | 18-19/12/2021                         | GUJPEDICON- 2021 workshop for DEIC staff   | Surat                                  | Dr Parth Vyas, Dr. Neha Patel   |
| 7      | 23/12/2021                            | Training on School Health RBSK Operational Plan Workshop                                   | Navsari                                | Dr Parth Vyas   |



| Sr. No | Date          | Activity   | Venue                                  | Attendees                              |
|--------|---------------|--|--|--|
| 8      | 09-11/01/2022 | Virtual Leadership Workshop by Oasis Movement  | Kharel                                 | Dr. Sharmishtha Patil, Dr. Mihir Dave  |
| 9      | 08-11/03/2022 | Leadership Workshop by Oasis Movement  | Chanod                                 | Dr. Sharmishtha Patil, Dr. Mihir Dave  |
| 10     | 09-16/03/2022 | Training for DEIC staff  | Shrimad Rajchandra Hospital, Dharampur | Mrs. Nimishal Patel, Mrs. Aarti Patel  |
| 11     | 17/03/2022    | Virtual training from Gandhinagar regarding SNCU monitoring  | Kharel                                 | Dr. Neha Patel, Mrs. Nimisha Patel     |
| 12     | 06/04/2021    | Virtual Mental Health Training by Nimitaben Bhatt and Dr. Ashwin Patel, TRU, Vadodara and Community Health Supervisors | Kharel                                 | Dr. Ashwin Shah, Dr. Sharmishtha Patil |

### External Meetings and Consultations attended by GST staff

| Sr. No | Date           | Activity   | Venue                        | Person   |
|--------|----------------|--|------------------------------|--|
| 1      | 07&09 /04/2021 | Virtual meeting with UHRU, U.S.A. team   | Kharel                       | GST team                                       |
| 2      | 10/05/2021     | Virtual JSA Steering Committee Meeting   |                              | Dr. Sharmishtha Patil                          |
| 3      | 29/06/2021     | DHS meeting and MDR/CDR/IMR review   | Navsari                      | Dr. Kachan Dhadwe                              |
| 4      | 27/08/2021     | PMJAY meeting and Webinar 'Sahardra' NGO collation by UNICEF and Commissioner        | IMA Hall, Navsari            | Dr. Kanchan Dhadve                             |
| 5      | 04/09/2021     | Virtual Mental Health Meeting by Nimitaben Bhatt and Dr. Ashwin Patel, TRU, Vadodara | Kharel                       | Community Health Staff                         |
| 6      | 07/09/2021     | Meeting with Bhansali Trust team Promotion of Sangee sanitary napkins                | Pimpri, Dang                 | Dr. Mihir Dave, Mr. Ravi Halpati               |
| 7      | 20/09/2021     | MDR and CDR review   | DDO office, Navsari          | Dr. Kanchan Dhadwe                             |
| 8      | 22/10/2021     | Virtual meeting with VHAI –Annual Governing Body Meeting                             | Kharel                       | Dr. H. A. Shah                                 |
| 9      | 20-22/11/2021  | 'Jan Swasthya Abhiyan' Virtual Secretariat meeting                                   | Kharel                       | Dr. Sharmishtha Patil                          |
| 10     | 27/11/2022     | 'Jan Swasthya Abhiyan' General Body Meeting (Virtual meeting)                        | Kharel                       | Dr. Sharmishtha Patil                          |
| 11     | 28/11/2021     | NGO meet organized by TMS Trust regarding launch of Educational app for students     | Ahmedabad                    | Dr. Sharmishtha Patil, Dr. Mihir Dave          |
| 12     | 02/12/2021     | COVID-19 3rd wave planning and preparedness meeting                                  | Collectorate Office, Navsari | Dr. A. A. Shah                                 |
| 13     | 21/12/2021     | Webinar on 'Developmentally Supportive Care in SNCU and DEIC'                        | Kharel                       | Dr. Parth Vyas, Dr. Neha Patel, Dr. Hiral Dave |
| 14     | 09/02/2022     | Virtual meeting regarding SHIKSHAK programme by Dhvani Foundation, Bengaluru         | Kharel                       | Dr. S. Patil, Dr. K. Dhadwe, Dr. Mihir Dave    |



| Sr. No | Date          | Activity   | Venue                        | Person                                      |
|--------|---------------|--|------------------------------|---|
| 15     | 11/02/2022    | Meeting to review Project premises for Early Childhood Development (ECD)                 | Kharel                       | Members of SPACT, AOP Gujarat and GST staff |
| 16     | 12/02/2022    | Virtual Mental Health Meeting by Nimitaben Bhatt and Dr. Ashwinbhai Patel, TRU, Vadodara | Kharel                       | Dr. S. Patil and Community Supervisors      |
| 17     | 03/03/2022    | Celebration of 'World Deformity Day'   | Jilla Panchayat, Navsari     | Dr. Hiral Dave                              |
| 18     | 16/03/2022    | MDR and CDR review   | Collectorate office, Navsari | Dr Kachan Dhadwe                            |
| 19     | 20/03/2022    | Gujarat Voluntary Health Association- Annual Governing Body Meeting                      | Bopal, Ahmedabad             | Dr. A. A. Shah<br>Dr. H. A. Shah            |
| 20     | 22/03/2022    | DEIC Orientation Review Meeting  | Ahmedabad                    | Dr. Parth Vyas                              |
| 21     | 28-29/08/2021 | Support Forum at Gumandev, Zagadia – SR AGM  |                              | Dr. A. A. Shah<br>Dr. H. A. Shah            |

## Visit to GST

| Sr.No | Date       | Activity   | Persons  |
|-------|------------|--|--|
| 1     | 24/07/2021 | Hospital visit- NICU, DEIC, Parodh Campus visit                            | Ms. Arpit Sagar, DDO, Navsari  |
| 2     | 26/10/2021 | DEIC department visit  | Dr. Pradyuman Rathod, Deputy Director DEIC, Gandhinagar  |
| 3     | 22/11/2021 | DEIC department visit for Quality Control by GMERS Medical College, Valsad | Dr. Vaibhav Garaj, PSM Department<br>Dr. Chintu Chaudhary, Paediatrics department              |
| 4     | 01/12/2021 | Parodh Campus visit  | Mr. Pratik Desai, Mrs. Amitaben Desai and family   |
| 5     | 08/12/2021 | Hospital campus visit  | CSR team, L&T, Hajira, Surat   |
| 6     | 11/12/2021 | Visit to Ophthalmology Department  | Dr. Tushar Mehta, Ophthalmologist, Civil Hospital, Navsari                                     |
| 7     | 11/12/2021 | Campus Visit and planning for Chondha Camp                                 | Shri Prakashbhai Nayak, USA  |
| 8     | 18/02/2022 | Co-ordination visit, Green way smokeless stoves                            | Mr. Ankit, Rajasthan   |
| 9     | 07/03/2022 | Campus Visit   | Dr. Ishaani Patel and Dr. Bipin Makwana (Principal) and 32 MPSW Students of Gujarat Vidyapeeth |

*There is no religion greater than truth and a truthful person knows no fear*

*- Rigved*



## Donation from India April-2021 to March-2022

| S.N. | Name of Donor   | Address     | Amount. |
|------|---|-------------|---------|
| 1    | Enviro Control Private limited  | Surat       | 1000000 |
| 2    | In memory of late Ms.Purna C.Bhavnagari by Dr. Nina C.Bhavnagari  | Surat       | 500000  |
| 3    | In memory of late Mr. Ishwarlal Mehta by Mrs. Lataben Ishwarlal Mehta   | Amalsad     | 500000  |
| 4    | Paragji Jivanji Desai & Matrushi Laduben Paragji Desai Charitable Trust, Surat  | Valsad      | 321152  |
| 5    | Mr. Kaushikbhai V.Shah  | Bangalore   | 200000  |
| 6    | In memory of late Mr. Narottamdas Narandas Mistry by Mr. Jitendra Narottamdas Mistry  | Navsari     | 200000  |
| 7    | Mr. Bhulabhai Bhikhabhai Patel  | Vachharvad  | 200000  |
| 8    | In memory of late Mrs.Lilavatiben Dolatrai Desai by Mrs. Rekhaben Mahendrabhai Desai & Mr. Pravinchandra D.Desai  | Navsari     | 151000  |
| 9    | In memory of late Mr. Dilipkumar P. Naik by Mr. Shantilal P.Naik  | Kotha       | 151000  |
| 10   | In memory of late Mr. Puskarra C.Shah, late Mrs. Maniben C.Shah by Mrs. Surbhiben P. Shah & Mrs.Tejasben D.Shah   | Gandhinagar | 139100  |
| 11   | M/s Welex Laboratories Pvt Ltd.   | Mumbai      | 100000  |
| 12   | Kharel Vibhag Vividh K. S. Mandali Ltd.   | Kharel      | 100000  |
| 13   | In memory of late Dr. M. N. Apte by Mrs. Vijayaben A.Apte   | Surat       | 100000  |
| 14   | In memory of late Mr. Mahavirbhai Joshi by Mrs. Niranjini Mahavir Joshi   | Changa      | 100000  |
| 15   | Dayaben Girjashanker Sheth Trust  | Mumbai      | 100000  |
| 16   | On Occasion of " Vedant's Birthday by Dr. Kaushika & Dr. Anant G.Patel  | Surat       | 100000  |
| 17   | Dr. Bipinbhai Amrutlal Desai  | Surat       | 100000  |
| 18   | Samast leuva Patidar Samaj Navsari  | Navsari     | 100000  |
| 19   | Mr. Kavinchandra Maneklal Shah  | Bilimora    | 75000   |
| 20   | Gurjar Manav Seva Trust   | Surat       | 61000   |
| 21   | Ujval Dharm Mahila Mandal,Ghatkopar   | Mumbai      | 59000   |
| 22   | Ms. Prarthana D. Shah, Ms. Yatri D.Shah, Mrs. Hetalben D.Shah & Mr.Devenbhai D.Shah   | Bilimora    | 51000   |
| 23   | M/s J.M.Shah  | Maroli      | 51000   |
| 24   | Ms. Darshika N. Jhaveri, Mrs. Harshaben N. Jhaveri & Mr.Nareshbhai Padmakant Jhaveri  | Mumbai      | 50000   |
| 25   | Mrs. Nalini Zaverchand Mehta c/o Manavjyot Public Charitable Trust  | Mumbai      | 50000   |
| 26   | Mr. Gunvantrai Nichhabhai Desai c/o Mrs.Rekhaben Girishbhai Desai   | Navsari     | 50000   |
| 27   | SPB Memorial Fund   | Surat       | 50000   |
| 28   | Gathani family  | Mumbai      | 47800   |
| 29   | In memory of late Mr. Vinodchandra Tevar by Mrs. Sarojini Vinodchandra Tevar  | Surat       | 42440   |
| 30   | Mr. Firoz J.Kavina & Mrs. Lily F Kavina   | Ahmedabad   | 40000   |
| 31   | In memory of late Mr. Chotubhai Jivanji Patel, late Mrs. Maniben C. Patel & late Mr. Arvindbhai C. Patel by Mrs. Sudhaben, Mrs.Geetaben & Mrs. Meenaben Patel | Haripura    | 40000   |
| 32   | Mr Bharatkumar Dahyabhai Desai  | Gandeva     | 40000   |
| 33   | Mrs. Sana T.Shaikh & Mr. Tabarez S.Shaikh   | Bilimora    | 35000   |
| 34   | Shri Chotalal Ramji Parmarth Trust  | Surat       | 35000   |
| 35   | In memory of late Mrs.Savitaben D.Patel, late Mrs.Parvatiben K.Patel, & late Mrs. Ratanben G. Patel by Mr. Durlabhbhai G.Patel                                | Khaparia    | 33000   |
| 36   | BMS Projects Pvt Ltd  | Surat       | 30000   |
| 37   | Mr.Bipinchandra Balvantrai Naik   | Jalalpore   | 30000   |
| 38   | Mr. Abdul Kadar Musabhai Tai  | Kotha       | 30000   |
| 39   | Ms. Natasha J.Banaji  | Mumbai      | 30000   |
| 40   | Mr. Sureshbhai B.Desai  | Surat       | 30000   |
| 41   | Mrs. Falguni S.Desai  | Surat       | 30000   |
| 42   | Mrs. Minaxiben Sureshbhai Desai   | Surat       | 30000   |



| S.N. | Name of Donor  | Address     | Amount. |
|------|--|-------------|---------|
| 43   | Mrs. Aparna V.Patel  | Surat       | 30000   |
| 44   | Mr. Devansh V.Patel  | Surat       | 30000   |
| 45   | Mr. Ashish A.Desai   | Navsari     | 29101   |
| 46   | Dr. Nita Abhay Kavishwar   | Surat       | 25000   |
| 47   | In memory of late Mrs. Lataben Ishwarlal Naik by Mr.Niketanbhai Ishwarlal Naik   | Bilimora    | 25000   |
| 48   | Gandhi Road Builders   | Navsari     | 25000   |
| 49   | Mr. Dipakbhai P.Sheth  | Mumbai      | 25000   |
| 50   | Mr. Jigneshkumar Gordhanbhai Patel   | Kharel      | 25000   |
| 51   | Mrs. Lilavati & Mr. Bhagvandas Laxman (UK)   | Gandeva     | 25000   |
| 52   | Shri Manorama Trust C/o Mr. Ashokkumar Trivedi   | Gandhinagar | 25000   |
| 53   | Hannu Enterprise   | Navsari     | 25000   |
| 54   | Gagan Mathur Trust   | Mumbai      | 25000   |
| 55   | Mrs. Meha Dipakbhai Patel  | Khaparia    | 25000   |
| 56   | AIC Technik Pvt Ltd  | Vapi        | 22000   |
| 57   | In memory of late Mr. Chhaganlal Ranchodji Desai & late Mr. Mohanlal Paragji Naik by Mr. Rajanbhai Mohanlal Naik & Mrs. Kaushikaben Rajanbhai Naik | Pipaldhara  | 22000   |
| 58   | Mr. Dineshchandra Maganlal Mehta   | Surat       | 21000   |
| 59   | Mr. Upendra Mansukhlal Mehta   | Ahmedabad   | 21000   |
| 60   | Mrs. Sushilaben M. Sidhpuria   | Kamrej      | 21000   |
| 61   | Mrs. Ekta Hardikbhai Desai, Mr.Hardik Dinkarra Desai & Mr. Dinkarra Kikubhai Desai   | Endhal      | 20000   |
| 62   | Mrs.Ramilaben Ramanlal Patel   | Navatalav   | 20000   |
| 63   | Ms. Katie Eruch Dalal  | Kolkata     | 20000   |
| 64   | In memory of late Mr. Rajmalbhai Shah by Mrs. Pannaben Rajmalbhai Shah   | Navsari     | 19200   |
| 65   | Smt Radhikaben Himmatlal Patel Charitable Trust  | Vadodara    | 17500   |
| 66   | In memory of late Mr. Kamleshbhai Shah by Mrs Dhariniben Kamleshbhai Shah  | Navsari     | 17100   |
| 67   | In memory of late Mr. Suryakant N. Shah & late Mrs. Kusumben S. Shah by Mr. Umeshbhai S.Shah   | Mumbai      | 16000   |
| 68   | Nandigram Trust  | Vankal      | 15000   |
| 69   | Yogesh Contruction Co.   | Surat       | 15000   |
| 70   | Mr. Maheshbhai Divyora   | Vadodara    | 15000   |
| 71   | Yogesh Surgical Works  | Surat       | 15000   |
| 72   | Mr.Umedbhai Khushalbhai Parmar c/o Mr. Shantilal G. Chauhan  | Amalsad     | 15000   |
| 73   | Mr.Nalinbhai A.Shah  | Surat       | 15000   |
| 74   | Mr.Chaman Lal  | New Delhi   | 15000   |
| 75   | Mrs.Kamlaben Morarbhai Rathod  | Ashtgam     | 13100   |
| 76   | Mr.Chandubhai Raghunathbhai Patel  | Surat       | 12500   |
| 77   | Mr.Bharatkumar Raghunathbhai Patel   | Surat       | 12500   |
| 78   | Sumeru Naik & Jay Naik Seva Trust  | Devdha      | 12000   |
| 79   | Mr. Arvind Tambi & Mrs. Deepika Tambi  | Vadodara    | 12000   |
| 80   | Mr. Mahendrabhai Ambalal Patel   | Surat       | 11000   |
| 81   | Mr. Narendrabhai Ambalal Patel   | Surat       | 11000   |
| 82   | Sumanbhai Zaverbhai Patel & Sons   | Maroli      | 11000   |
| 83   | Capital Infastructure  | Surat       | 11000   |
| 84   | Mr.Pankajkumar Hirachand Shah  | Mumbai      | 11000   |
| 85   | Dr.Ratna Magotra   | Mumbai      | 11000   |
| 86   | Mr.Jayprakash U.Mehta  | Navsari     | 11000   |
| 87   | Mr. Sudhir Naik  | Ahmedabad   | 11000   |



◀ Inauguration of Dialysis Unit in presence of Dr. Khushroo Patel, Mr. Dineshbhai Shah and Guests.

▶ Inauguration of General Ward



◀ I.C.U. Ward

▶ Dialysis Ward



►  
Eye Camp



◀  
Blood Donation Camp

►  
Parents and children in  
diagnostic camp for Heart  
diseases



◀  
General Medical and Surgical  
Camp, Shamgahan



◀ Financial Literacy Workshop



▶ Mobile Clinic in AAA Project,  
Dang



▶ Smokeless stove demonstration  
in villages



▶ Home tuition to "Parodh" Balawas  
Children during Covid-19  
Pandemic

► Awareness activity for Childline Services



◀ Shabari sewing class at Shivaram, Dang

► Rangoli Competition for GST Staff



◀ "Shri Manbhai Bhatt" Award received by Dr. Mihir Dave



| S.N. | Name of Donor  | Address      | Amount. |
|------|--|--------------|---------|
| 88   | Prakash Trust c/o Malini Sheth   | Mumbai       | 10000   |
| 89   | Mrs.Pravinaben Manharlal Naik  | Amalsad      | 10000   |
| 90   | Mrs.Hemlataben Gopalbhai Ahir  | Vadodara     | 10000   |
| 91   | Mr. Darshak Akshay Solanki   | Ahmedabad    | 10000   |
| 92   | Mrs. Nilaben Hasmukhbhai Shah  | Ahmedabad    | 10000   |
| 93   | In memory of late Mr.Vasanji Kalyanji Lad, late Mrs.Ramiben Vasanji Lad by Mrs. Kantaben Govindji Lad & Mr. Govindji P.Lad   | Kachholi     | 10000   |
| 94   | Mr. Divyeshkumar Bhagwanbhai Tandel  | Bilimora     | 10000   |
| 95   | Mrs. Rekhaben Mahendrabhai Desai c/o Mr.Pravinbhai D.Desai   | Navsari      | 10000   |
| 96   | In memory of late Mr. Kamleshbhai Shah by Mrs Divya Milind Shah  | Ahmedabad    | 10000   |
| 97   | Mr. Ajay Jayantilal Ratilal Shah Charitable Family Trust   | Ahmedabad    | 10000   |
| 98   | Ms. Aloo Phiroze Cama & Mr. Pervez Phiroze Cama  | Pune         | 10000   |
| 99   | Mrs.Artiben Banker   | Surat        | 10000   |
| 100  | In memory of late Mr.Khandubhai & late Mrs.Induben by Mr. Jogeshbhai Khandubhai Vashi  | Ahmedabad    | 10000   |
| 101  | New Atrik Hospital c/o Dr. Janakbhai Patel   | Bilimora     | 10000   |
| 102  | Ms. Vahbiz Pestonjamasap   | Mumbai       | 10000   |
| 103  | Mr. Dixitbhai Ishwarlal Desai  | Amalsad      | 10000   |
| 104  | In memory of late Mrs.Ansuyaben & Mr. Padmakant Jhaveri by Mrs. Geetaben U.Shah  | Mumbai       | 10000   |
| 105  | Mrs. Kiran Sayal   | Mumbai       | 10000   |
| 106  | Dr (Mrs.) Shirin & Mr. Homi Mullan   | Mumbai       | 10000   |
| 107  | Mr. Pratik Dilip Adani   | Mumbai       | 10000   |
| 108  | Mrs. Laxmiben Solanki  | Amalsad      | 10000   |
| 109  | Mr. Parimal Jambusaria   | Ahmedabad    | 10000   |
| 110  | Ms.Persis Hosheder Pestonjamasap   | Mumbai       | 10000   |
| 111  | Mrs. Ilaben Bharatkumar Desai  | Gandeva      | 10000   |
| 112  | Mrs. Ashaben Kumarbhai Mistry  | Mumbai       | 10000   |
| 113  | Mr. Ronak A.Shah   | Udaipur      | 10000   |
| 114  | In memory of late Mr. Jayantibhai Nichhabhai Naik by Mrs. Hansaben J Naik & Mr. Nirav Khandubhai Naik  | Devdha       | 9000    |
| 115  | Mr. Kartik Suthar  | Ahmedabad    | 8584    |
| 116  | In memory of late Mr. Kantilal M. Shah, late Mrs. Nirmalaben K. Shah & late Mrs.Saritaben R.Shah by Mr. Rakeshkumar Kantilal Shah  | Amalsad      | 8400    |
| 117  | Mr. Dhirajbhai Awasthi   | Valsad       | 8000    |
| 118  | In memory of late Mr. Nanubhai Lallubhai Patel, late Mrs. Chanchalben Nanubhai Patel & late Mrs.Sukhiben Haribhai Patel (Sadakpor) by Prof. Uttambhai N.Patel  | Vasan        | 7502    |
| 119  | In memory of late Mr.Sureshbhai Naranbhai Patel by Mrs. Krupa Devesh Patel & Mr. Lalubhai Sureshbhai Patel   | Navsari      | 7500    |
| 120  | Mr.Thakorabhai Jagjivandas Darji   | Rankuva      | 7000    |
| 121  | Mrs.Komalben & Mr. Jigneshkumar Karshanbhai Patel  | Sarpor Pardi | 6300    |
| 122  | Mrs.Chhyaben Bimalbhai Shah  | Valsad       | 6100    |
| 123  | Mrs.Chetnaben Paresbhai Sutaria  | Mumbai       | 6100    |
| 124  | Mrs.Shilpa Ojasbhai Desai  | Surat        | 6050    |
| 125  | In memory of late Mr. Dhirubhai Gulabbhai Mehta, late Mrs. Shantaben Dhirajlal Mehta, late Mr. Maganlal Dayalji Mehta, late Mrs. Gajraben Maganlal Mehta, late Mr.Chhaganlal Bhikhabhai Desai & late Mrs.Shantaben Chhaganlal Desai by Mr. Jitendrakumar D. Mehta & Mrs. Ranjanben J.Mehta | Pipaldhara   | 6000    |
| 126  | On Occasion of " Shlok's Birthday by Dr. Kanchan Ashok Dhadwe  | Kharel       | 6000    |
| 127  | Pragnya Agency   | Surat        | 5500    |



| S.N. | Name of Donor   | Address      | Amount. |
|------|---|--------------|---------|
| 128  | Krupa Engineering   | Surat        | 5500    |
| 129  | Siddhi Vinayak Infrastructure   | Surat        | 5100    |
| 130  | Mr. Hasmukhbhai T. Limbachiya   | Surat        | 5100    |
| 131  | Kalapi Enterprise   | Surat        | 5100    |
| 132  | Mr. Manubhai Kikabhai Patel   | Sarpor Pardi | 5100    |
| 133  | Mr. Ramdas Prabhu   | Mumbai       | 5001    |
| 134  | Mr. Hemalbabu Jayendralal Jhaveri   | Bharuch      | 5001    |
| 135  | Ms. Anshi Nishit Shah   | Zaghadia     | 5000    |
| 136  | Mr. Subhash L.Shah  | Mumbai       | 5000    |
| 137  | Mrs. Pritiben Jigarbhai Naik  | Gandeva      | 5000    |
| 138  | In memory of late Mr. Anilbhai Dhirajlal Desai, late Mrs. Amitaben Anilbhai Desai, late Mr. Kalpen Janakrai Mehta & late Mr. Ballubhai Gulabbhai Desai by Mr. Janakrai Dhirajlal Mehta & Mrs. Raxaben J.Mehta | Pipaldhara   | 5000    |
| 139  | Mr. Rajendrabhai Khetabhai Patel  | Kharel       | 5000    |
| 140  | Mr. Amar P.Jhaveri  | Mumbai       | 5000    |
| 141  | Mr. Tusharbhai Hansraj Thakkar  | Gandhinagar  | 5000    |
| 142  | Mr. Jaysukhlal B.Mehta  | Mumbai       | 5000    |
| 143  | Ms. Yashna Nipun Mehta  | Mumbai       | 5000    |
| 144  | Mrs. Sanskruti Ghanshyam Shah   | Ahmedabad    | 5000    |
| 145  | Dr. Upendra B.Kalaigar  | Surat        | 5000    |
| 146  | In memory of late Ms. Shardaben Dolatrai Naik by Mrs. Kusumben Kiritbhai Desai  | Pipaldhara   | 5000    |
| 147  | Mr. Jitendrakumar Maganlal Mehta  | Amalsad      | 5000    |
| 148  | Mr. Balvantrai A.Joshi  | Ahmedabad    | 5000    |
| 149  | Ms. Dilnavaz Ardeshir Jamasp  | Mumbai       | 5000    |
| 150  | Mr. Sureshchandra B.Naik  | Surat        | 5000    |
| 151  | In memory of late Mrs. Nilaben Natvarlal Bhandari by Mr. Natvarlal Vasanji Kuber  | Gandeva      | 5000    |
| 152  | In memory of late Mr. Dhirajlal Haribhai Desai by Mrs. Damyantiben D.Desai  | Navsari      | 5000    |
| 153  | Mrs. Induben Dhansukhbhai Patel & Mr. Dhansukhbhai Lallubhai Patel  | Khaparia     | 5000    |
| 154  | Mr. Babubhai Maganbhai Patel (Rundhvada) c/o Shri Surat Jilla Leuva Patidar Samaj   | Bardoli      | 5000    |
| 155  | Mr. Gautambhai Mehta  | Mumbai       | 5000    |
| 156  | In memory of late Mr. Ishwarbhai Naik by Mr. Akhilbhai Ishwarbhai Naik  | Mumbai       | 4600    |
| 157  | In memory of late Mr. Sumantrai Gulabbhai Mehta & late Mrs. Kusumben S. Mehta by Mr. Kaushikbhai & Mr. Ketanbhai S.Mehta  | Gandeva      | 4200    |
| 158  | In memory of late Mrs. Shantaben Thakorabhai Desai & Mr. Thakorabhai Nanubhai Desai by Mr. Bhupendrabhai Thakorabhai Desai  | Vasan        | 4200    |
| 159  | Mrs. Shivaliben K. Patel  | Pati         | 4200    |
| 160  | In memory of late Mrs. Hansaben Manharbhai Shah & late Mr. Manharbhai Muljibhai Shah by Mr. Prakashbhai, Mr.Vijaybhai & Mr. Nileshbhai Shah   | Chikhli      | 4200    |
| 161  | In memory of late Mrs. Induben Moghabhai Naik & late Mr. Moghabhai Lallubhai Naik by Mr. Bankimbhai Moghabhai Naik  | Pipaldhara   | 4000    |
| 162  | In memory of late Mrs. Pushpaben V. Shah & late Mr. Pankajbhai V. Shah by Mr. Kiritbhai V.Shah  | Udvada       | 3600    |
| 163  | In memory of late Mr. Girishbhai Moghabhai Desai by Mr. Chirag Girishbhai Desai   | Mumbai       | 3600    |
| 164  | In memory of late Mrs. Shantaben & late Mr. Kasanjibhai (Mangubhai) Desai by Mr. Jitendrabhai Kasanjibhai Desai   | Gandeva      | 3600    |
| 165  | In memory of late Mr. Ramanbhai Chotubhai Mistry by Mrs. Bakulaben Ramanlal Mistry  | Valsad       | 3500    |
| 166  | In memory of late Mr. Dhirubhai Rambhai Naik & late Mrs.Kamuben Ramanlal Desai by Mr. Shirishbhai Ramanlal Desai  | Navsari      | 3200    |



| S.N. | Name of Donor   | Address      | Amount. |
|------|---|--------------|---------|
| 167  | Mrs. Raxaben Hitenbhai Sutaria  | Mumbai       | 3200    |
| 168  | In memory of late Mrs. Kamlaben H. Desai, late Mrs. Savitaben G. Desai by Mrs. Ramilaben Rajendrabhai Desai         | Pipaladhara  | 3000    |
| 169  | Mr. Rajendrabhai Haribhai Desai   | Pipaladhara  | 3000    |
| 170  | Fortune Micro System c/o Mr. Sanjaybhai Shah  | Mumbai       | 2500    |
| 171  | Mr. Shivram Ayyar   |              | 2500    |
| 172  | Mr. Hiralal B.Varia   | Gandhinagar  | 2500    |
| 173  | Mr. Tanmay Dineshbhai Shah  | Mumbai       | 2500    |
| 174  | In memory of late Mr.Chotubhai Ranchhodhbhai Patel by Mrs. Kashiben Chotubhai Patel                                 | Sarpor Pardi | 2500    |
| 175  | Mr Chandreshbhai B.Shah   | Ahmedabad    | 2200    |
| 176  | Mr Dhirenbhai N.Parikh  | Ahmedabad    | 2200    |
| 177  | In memory of late Mr.Chintan Ashokbhai Shah & late Mr.Pankajbhai Vanechand Shah by Mrs. Kalpanaben Ashokbhai Mehta  | Dahanu       | 2200    |
| 178  | On Occasion of " Om's Birthday by Mr. Bhaveshbhai Rajendrabhai Desai  | Pipaladhara  | 2200    |
| 179  | In memory of late Mr. Hirensinh B. Parmar by Mr. Balvantsinh G. Parmar  | Ranverikalla | 2100    |
| 180  | Mrs. Jayashriben Dharmeshbhai Naik  | Amalsad      | 2100    |
| 181  | In memory of late Mr. Somabhai Raghabhai Patel by Mrs. Jashuben S.Patel   | Suthvad      | 2100    |
| 182  | In memory of late Mrs. Poonam V. Dansingani by Mr. Manohar V. Dansingani  | Pune         | 2100    |
| 183  | In memory of late Mrs. Lataben Nareshbhai Shah by Mr. Nareshbhai K. Shah  | Surat        | 2100    |
| 184  | In memory of late Mr. Manharbhai Muljibhai Shah by Mr.Vijaybhai M. Shah   | Chikhli      | 2100    |
| 185  | Dr. Harshaben A. Shah   | Kharel       | 2100    |
| 186  | On Occasion of 'Vrushti Rahul Shah's Birthday' by Mr. Jaybhai Shah  | Khaparia     | 2100    |
| 187  | In memory of late Mr.Natubhai Maganlal Desai by Mr. Yachit Parimalbhai Desai  | Navsari      | 2100    |
| 188  | In memory of late Mr.Thakorbbhai Dahyabbhai Patel (Degam) by Mr. Nareshbhai T Patel                                 | Kharel       | 2100    |
| 189  | In memory of late Mrs. Vanitaben Vinodbhai Patel by Mr. Vinodbhai B. Patel  | Kachholi     | 2100    |
| 190  | Mr. Hareshbhai Sanghrajka   | Mumbai       | 2100    |
| 191  | On occasion of 'Sumanben G Shah's Birthday' by Mr.Nareshbhai G.Shah   | Amalsad      | 2100    |
| 192  | In memory of late Mr. Manojbhai Chhotubhai Vashi by Mr. Vihar Manojbhai Vashi                                       | Dhamdachha   | 2100    |
| 193  | In memory of late Mrs. Rekha Kiritbhai Patel by Mr. Abhi Kiritbhai Patel  | Endhal       | 2100    |
| 194  | Mr. Devjibhai Dhanjibhai Tandel   | Navsari      | 2100    |
| 195  | In memory of late Mrs. Rukhiben Ranchhodhbhai Patel (Chapaladhara) by Mr. Manubhai Kikabhai Patel                   | Sarpor Pardi | 2100    |
| 196  | In memory of late Mr. Jaybhai Shah by Mr. Rahulkumar & Mr. Amitkumar J.Shah   | Khaparia     | 2100    |
| 197  | Mr. Jayeshbhai Thakorbbhai Patel  | Endhal       | 2100    |
| 198  | In memory of late Mrs. Dahiben Gulabbhai Rathod by Mr. Jitendrabhai & Mr. Kishorbhai G.Rathod                       | Pipaladhara  | 2100    |
| 199  | In memory of late Mrs. Maniben M. Naik & late Mr. Mohanbhai P. Naik by Mr. Maheshbhai M.Naik                        | Pipaladhara  | 2002    |
| 200  | In memory of late Mr. Morarjibhai B. Desai & late Mrs. Paliben M. Desai by Mr. Subhashbhai Morarji Desai            | Rankuva      | 2000    |
| 201  | Manavijyot Public Charitable Trust  | Mumbai       | 2000    |
| 202  | Mr. Pilloo Sorabji Pastakia   | Mumbai       | 2000    |
| 203  | In memory of late Mr. Gunvantbhai Hirachand Shah by Mr. Nareshbhai G. Shah  | Amalsad      | 2000    |
| 204  | In memory of late Mr. Amratlal Desai & late Ms. Kantaben Desai by Mrs. Kalpanaben Desai                             | Dahanu       | 1700    |
| 205  | In memory of late Mrs. Sarlaben I.Desai by Mr. Chetanbhai I.Desai & Mrs. Manaliben Desai                            | Pipaladhara  | 1500    |
| 206  | In memory of late Mr. Arvindbhai Nathubhai Naik (Haldharu) by Mrs. Surekhaben Arvindbhai Desai & Mrs. Nitaben Desai | Pipaladhara  | 1500    |
| 207  | In memory of late Master Chakshu Yogeshbhai Desai by Mr. Yogeshbhai Moghabhai Desai                                 | Pipaladhara  | 1500    |



| S.N. | Name of Donor   | Address     | Amount. |
|------|---|-------------|---------|
| 208  | In memory of late Mr. Nilkanthbhai P. Desai by Mrs. Sudhaben N Desai                  | Gandeva     | 1101    |
| 209  | In memory late Mr. Rajeshbhai Mangubhai Desai by Mrs. Ranjanben Rajeshbhai Desai      | Endhal      | 1101    |
| 210  | In memory of late Mr. Bhanabhai D. Patel by Mr.Girishbhai B.Patel                     | Manekpor    | 1100    |
| 211  | Mr. Naman Kaushikbhai Sutaria   | Mumbai      | 1100    |
| 212  | In memory of late Mr.Amratbhai G. Patel C/o Mrs. Ambaben Amratbhai Patel              | Endhal      | 1100    |
| 213  | Mr. Nirav U.Shah  | Surat       | 1100    |
| 214  | Mr. Chandreshbhai B.Shah  | Ahmedabad   | 1100    |
| 215  | Mr. Altaf D.Khalifa   | Chapaldhara | 1100    |
| 216  | In memory of late Mr. Harshadbhai Desai C/o Mrs. Kalpnaben Desai                      | Dahanu      | 1100    |
| 217  | In memory of late Mr. Kamleshbhai Shah C/o Mrs. Jayashriben K. Shah                   | Chikhli     | 1100    |
| 218  | Ms. Heni Rajendrakumar Patel  | Navsari     | 1100    |
| 219  | Mrs. Smitaben Pankajbhai Shah   | Ahmedabad   | 1000    |
| 220  | Mr. Krunal Shah   | Ahmedabad   | 1000    |
| 221  | Mr. Yogeshbhai N.Parikh   | Gandhinagar | 1000    |
| 222  | Mr. Pareshbhai R.Pathak   | Gandhinagar | 1000    |
| 223  | Mr. K. B. Joshi   | Gandhinagar | 1000    |
| 224  | Mr. Kumarbhai J. Mistry   | Mumbai      | 1000    |
| 225  | Mr. Devendrabhai Dinubhai Desai   | Bilimora    | 1000    |
| 226  | Mrs. Purviben Rakeshbhai Desai  | Navsari     | 600     |
| 227  | Mr. Amratbhai Durlabhbhai Patel   | Bilimora    | 500     |
| 228  | Mr. Bharatkumar Parbhubhai Patel  | Sadakpor    | 500     |
| 229  | Mrs. Smitaben Vijaybhai Gandhi  | Surat       | 500     |
| 230  | In memory of late Mrs. Narmadaben Ramubhai Panchal by Mr. Ramubhai Bhikhabhai Panchal | Unai        | 500     |
| 231  | Mr. Pratik Sanghrajka   | Mumbai      | 500     |

### Donation for Corpus fund from India during April'21 to Mar'22

| Sr.No | Name of Donor  | Address    | Amount. |
|-------|--|------------|---------|
| 1     | Mrs. Gajaraben Ramanlal Patel  | Navatalav  | 300000  |
| 2     | Mr. Rameshbhai T.Patel (USA)   | Shampura   | 251000  |
| 3     | In memory of late Mrs. Induben Moghabhai Naik & late Mr. Moghabhai Lallubhai Naik by Mr. Bankimbhai Moghabhai Naik   | Pipaldhara | 200000  |
| 4     | In memory of late Mr.Dhirubhai Zinabhai Naik (Kachholi) & late Mrs.Kantaben Dhirubhai Naik by Mr. Bharatkumar Dhirubhai Naik                                   | Valsad     | 51111   |
| 5     | Mr. Prakashbhai Dahyabhai Naik   | Navsari    | 51000   |
| 6     | Ms. Ami Dharmeshbhai Patel   | Khaparia   | 51000   |
| 7     | In memory of late Mr. Prabhubhai Valjibhai Patel & late Mrs. Gangaben Parbhubhai Patel by Mr. Baldevkumar Parbhubhai Patel & Mr. Navinchandra Parbhubhai Patel | Surat      | 30351   |
| 8     | In memory of late Mr. Mayankbhai Purohit by Mrs. Nishaben Mayankbhai Purohit   | Navsari    | 25000   |
| 9     | In memory of late Mr. Indukumar Ranchhodji Desai by Mr. Piyushbhai Indukumar Desai   | Navsari    | 25000   |
| 10    | In memory of late Mrs. Hansaben Manharbhai Shah & late Mr. Manharbhai Shah by Mr. Nileshbhai M. Shah & Mr. Urveshbhai M. Shah                                  | Chikhli    | 22000   |
| 11    | Mr. Gautambhai Mehta   | Mumbai     | 21840   |
| 12    | Mr. Gunvantrai Ranchhodji Naik   | Chalthan   | 21000   |
| 13    | In memory of late Mrs. Hemlataben S. Naik by Mr. Jinal Satishbhai Naik (Rang Avdhut Agro) & Family   | Gadat      | 15000   |



| Sr.No | Name of Donor  | Address    | Amount. |
|-------|--|------------|---------|
| 14    | In memory of late Mrs. Lalitaben Chotubhai Patel by Mrs. Pravinaben, Mrs. Meenaben, Mrs. Daxaben, Mrs. Ushaben (USA) & Mrs. Heenaben C.Patel | Kharel     | 15000   |
| 15    | In memory of late Mrs. Champaben Tribhovandas Gajjar by Mrs. Laxmiben Jayendrabhai Mistry  | Surat      | 15000   |
| 16    | Ujval Dharm Mahila Mandal Ghatkopar  | Mumbai     | 13000   |
| 17    | Mr. Darshit Jayraj Naik  | Navsari    | 11111   |
| 18    | In memory of late Master Chakshu Yogeshbhai Desai by Mr. Yogeshbhai Moghabhai Desai  | Pipaldhara | 11000   |
| 19    | In memory of late Mrs. Kusumben Suryakant Shah by Mr. Umeshbhai Suryakant Shah   | Mumbai     | 11000   |

### Donation from Abroad April'21 to Mar'22

| Sr.No. | Name of Donor   | Address  | Amount. In Rs. |
|--------|---|----------|----------------|
| 1      | Helping Hands of Germany  | Germany  | 705693         |
| 2      | In memory of late Mr. Morarbhai Premabhai Mistry, late Mrs. Manjulaben & late Mr. Devabhai Nagarabhai Mistry by Mrs. Shantaben Morarbhai Mistry & Mr. Rohitbhai M. Mistry | Canada   | 508400         |
| 3      | Mrs.Nayna A.Patel, Mrs.Kunjai A.Patel, Mrs. Vaishali V. Patel, Mrs Radhika A. Patel, Mr. Ambubhai B. Patel c/o Mr. Mohan S. Patel.  | USA      | 101000         |
| 4      | Mr. Rushikesh V.Desai   | USA      | 100001         |
| 5      | Mrs. Sitaben D. Patel & Mr. Durlabhbhai B. Patel  | UK       | 100000         |
| 6      | Mrs. Meena Mistry & Mr. Vinod Mistry C/o Mr. Durlabhbhai B. Patel   | UK       | 72200          |
| 7      | Mrs. Nirmalaben D.Mistry & Mr. Dahyabhai Parshottambhai Mistry c/o Mr. Durlabhbhai B. Patel   | UK       | 51500          |
| 8      | The Shamdassani Foundation  | Hongkong | 50000          |
| 9      | In memory of late Mr.Nalinbhai J.Desai C/o Mr.Nalinbhai T. Desai  | USA      | 50000          |
| 10     | Mrs. Sushilaben L.Patel c/o Mr. Durlabhbhai B. Patel  | UK       | 26000          |
| 11     | Mr. Rohinton & Roshan Rivetna   | USA      | 25000          |
| 12     | Mrs. Minaxi Rameshbhai Shah   | USA      | 25000          |
| 13     | Mrs. Amita Desai  | Kuwait   | 10500          |
| 14     | Mrs. Santaben Suthar c/o Mr. Durlabhbhai B. Patel   | UK       | 10300          |
| 15     | Mr. Kaushik J. Desai  | UK       | 10000          |

### Corpus Donation from Abroad April'21 to March'22

| Sr.No. | Name of Donor   | Address | Amount. In Rs. |
|--------|---|---------|----------------|
| 1      | Gram Seva Foundation  | USA     | \$651,000      |
| 2      | Desai Foundation  | USA     | 1127016        |
| 3      | Yuva Pragati INC. c/o Mr. Ashwin Desai  | USA     | 737131         |
| 4      | In memory of late Mr. Morarbhai Premabhai Mistry, late Mrs. Manjulaben & late Mr. Devabhai Nagarabhai Mistry by Mrs. Shantaben Morarbhai Mistry & Mr. Rohitbhai M. Mistry | Canada  | 600000         |
| 5      | Unified Healthcare for Rural Underserved c/o Mr. Jitendrabhai R. Mehta  | USA     | 133110         |
| 6      | In Memory of late Mr. Khandubhai Kalidas Patel & late Mrs. Gangaben K. Patel c/o Mr. Jayantibhai V. Patel & Mrs. Hasumatiben J.Patel                                      | USA     | 50000          |

**Donations from India 01-04-2022 to 30-09-2022**

| S.N. | Name of Donor  | Address              | Amount. |
|------|--|----------------------|---------|
| 1    | Gathani family   | Mumbai               | 163600  |
| 2    | In memory of late Mr.Balubhai Premabhai Patel Smt.Ramilaben B.Patel Family through Mr.Yogeshbhai Balubhai Patel  | Zervavra             | 141001  |
| 3    | "Bachubhai Dhamdachha Memorial Fund" c/o Mr. Surendrakumar Khandubhai Desai(Navsari) & Mr.Rashmikant Maganlal Vashi  | Navsari              | 135200  |
| 4    | In memory of late Mr.Maganbhai Lallubhai Patel, late Mr. Khandubhai L.Patel, late Mr.Ramanbhai L.Patel, late Mr.Naginbhai L.Patel, late Mr.Manishbhai I Patel late Mr.Vishal V.Patel & Mrs.Madhuben Khandubhai Patel by Mr.Hemantbhai Maganbhai Patel & Family | Khaparia             | 128226  |
| 5    | Paragji Jivanji Desai & Matrushri Laduben Paragji Desai Charitable Trust, Surat  | Valsad               | 117345  |
| 6    | In memory of late Mr.Ambelal N.Parmar & late Mrs. Kashiben A.Parmar by Mr.Ishwarlal A.Parmar & Mrs.Bhartiben I Parmar (UK) through Mr.Ramanlal Lallubhai Solanki   | Bardoli              | 100000  |
| 7    | Kharel Vibhag Vividh Karykari Sahakari Mandali   | Kharel               | 100000  |
| 8    | In memory of late Mr.Govindbhai Gopalji Patel, late Mrs.Ratanben Govindji Patel, late Mrs. Parvatiben Durlabhbhai Patel & late Mr. Dinubhai Govindji Patel by Mr.Durlabhbhai G.Patel   | Khaparia             | 100000  |
| 9    | Dr.Neeta A.Kavishwar & Dr.Abhay B. Kavishwar   | Surat                | 75000   |
| 10   | In memory of late Mr.Naranji Durlabhbhai Naik & late Mrs.Savitaben Naranji Naik on Occasion of "Avadh's Birthday by Mr.Jayeshbhai Naranji Naik & Mrs.Diptiben Jayeshbhai Naik  | Gandeva              | 51000   |
| 11   | In memory of late Sumitraben Ratilal Mehta by Mr.Ratilal Gulabbhai Mehta & Mr.Samir Ratilal Mehta  | Bilimora             | 51000   |
| 12   | Shri Dahyabhai Durlabhbhai Patel & Smt. Shantaben Dahyabhai Patel Family   | Butlav               | 50011   |
| 13   | Mr.Dinkarra Nanubhai Desai   | Valsad               | 50000   |
| 14   | Mr.Satishchandra Ramanlal Desai  | Navsari              | 50000   |
| 15   | Pankaj Kapdia Charitable Trust   | Surat                | 50000   |
| 16   | In memory of late Mr.Ramanlal Khandubhai Vashi & late Mrs.Induben R.Vashi by Mr.Chetankumar Ramanlal Vashi   | Navsari              | 50000   |
| 17   | Manorama Trust c/o Mr. Ashokbhai Trivedi   | Gandhinagar          | 35000   |
| 18   | Mrs.Nirmala Atul Chavan  | Mumbai               | 30000   |
| 19   | Mr.Bhoodhar Mithal   | Surat                | 25000   |
| 20   | Mr.Nishchay Kshitij Gandhi   | Amalsad              | 25000   |
| 21   | Mrs.Hemlataben Gopalbhai Ahir  | Vadodara             | 22500   |
| 22   | Mrs.Charu Hareh Sanghrajka & Mr. Hareh N.Sanghrajka  | Mumbai               | 22000   |
| 23   | In memory of late Mr.Dolatbhai Nichhabhai Vashi by Mr.Jayeshbhai Dolatbhai Vashi through Mr Satishbhai Naik (Gadat)  | Ancheli (At Navsari) | 21000   |
| 24   | In memory of late Mr.Ranjitbhai Kuvarji Mehta, late Mr.Ishwarlal Gulabbhai Desai, late Mrs. Maniben Ishwarlal Desai & late Mr.Champakbhai Thakorabhai Desai C/o Mr Maheshbhai Ishwarlal Desai by Mr Satishbhai M.Naik  | Surat                | 21000   |
| 25   | In memory of late Mr.Ishvarlal Bhimabhai Mistry C/o Mr Bharatkumar Ishwarlal Mistry  | Gandeva              | 21000   |
| 26   | Ms Yatri D.Shah,Ms Prarthana D.Shah,Mrs Hetalben D.Shah & Mr Devenkumar Dineshbhai Shah  | Bilimora             | 20000   |
| 27   | Smt.Surbhiben P.Shah by Mrs Tejasben D.Shah  | Gandhinagar          | 18200   |
| 28   | In memory of late Mr.Nishchal Mukeshbhai Desai by Mrs.Daxaben Mukeshbhai Desai   | Endhal               | 15000   |
| 29   | In memory of late Mr.Ratilal Govindji Shah (Khaparia) by Mr. Nilesbhai Shah, Shri Ramdevji Tararati Charitable Trust   | Surat                | 15000   |
| 30   | Mrs.Pravinaben Manharlal Naik  | Amalsad              | 15000   |
| 31   | Mrs.Falguni Desai and Mrs. Manisha Desai (Canada)  | Devdha               | 12200   |



| S.N. | Name of Donor   | Address     | Amount. |
|------|---|-------------|---------|
| 32   | Mrs.Ragini Nileshbhai Desai   | Surat       | 11111   |
| 33   | Mr.Jyotindra Mohanlal Desai   | Bilimora    | 11000   |
| 34   | Mr.Pankaj Hirachand Shah  | Mumbai      | 11000   |
| 35   | Shree Krishna Jewellers   | Bilimora    | 11000   |
| 36   | Dr.Rajshekhar Brahmbhatt  | Mumbai      | 11000   |
| 37   | Mr.Jitendra Khetabhai Patel   | Kharel      | 11000   |
| 38   | In memory of late Mrs.Kusumben Suryakant Shah C/o Mr.Umeshbhai S.Shah   | Mumbai      | 11000   |
| 39   | Mr.Sandip Kotecha   | Surat       | 10000   |
| 40   | Radhikaben Himatlal Patel Charitable Trust  | Vadodara    | 10000   |
| 41   | Mrs.Divya Milind Shah   | Ahmedabad   | 10000   |
| 42   | Mrs.Divyaben Hiralal Varia  | Gandhinagar | 10000   |
| 43   | New Atrik Hospital  | Bilimora    | 10000   |
| 44   | On Occasion of Birthday C/o Mr.Karshanbhai Rambhai Patel & Mr.Jigneshkumar K. Patel                                 | Sarpor      | 6300    |
| 45   | "In memory of late ""Bhavya"" C/o Mr.Vimalbhai Ramanbhai Naik & Mrs.Sangitaben Vimalbhai Naik                       | Gadat       | 5002    |
| 46   | Mr.Anilbhai Satyadev Naik   | Dhamdachha  | 5001    |
| 47   | Bhikha Vallabh Charity Trust  | Mumbai      | 5000    |
| 48   | Mrs.Vandana Dipakbhai Desai   | Vadodara    | 5000    |
| 49   | Ms.Armaity Sapur Desai  | Mumbai      | 5000    |
| 50   | In memory of late Shri.Gunvantbhai Chhotubhai Naik by Smt.Naynaben G.Naik   | Dambhar     | 5000    |
| 51   | Mrs. Amita Pratik Desai   | Mumbai      | 5000    |
| 52   | In memory of late Shri.Bhagvanji Kasanji Naik (Vegam) by Mr. Moghabhai Bhikhubhai Naik                              | Vegam       | 5000    |
| 53   | Mrs. Smita Amar Jhaveri   | Mumbai      | 5000    |
| 54   | Mr. Jitendrakumar Maganlal Mehta  | Amalsad     | 5000    |
| 55   | Mr.Tusharbhai Hansraj Thakkar & Mrs Kusumben Hansraj Thakkar  | Gandhinagar | 5000    |
| 56   | Mr. Hetal Girish Arsania  | Mumbai      | 4600    |
| 57   | In memory of late Shri Arvindbhai Chotubhai Patel by Smt.Sushilaben A.Patel through Mrs Nilaben Gunvantrai Patel    | Gandeva     | 4501    |
| 58   | In memory of late Smt.Sumatiben Doctor & Shri.Gunvantbhai Doctor by Smt.Sarojini V.Tevan                            | Surat       | 4300    |
| 59   | In memory of late Shri.Ramanlal Harilal Rathod by Mr.Hetal Girish Arsania   | Mumbai      | 4200    |
| 60   | Mr.Kumarbhai J.Mistry ( Mrs. Ashaben Mistry & Mrs.Mayaben PShah)  | Mumbai      | 4200    |
| 61   | In memory of late Shri.Thakorbhai Nanubhai Desai & late Smt.Shantaben T. Desai by Mr.Bhupendrabhai Thakorbhai Desai | Vasan       | 4200    |
| 62   | In memory of late Shri.Jayantibhai Nichhabhai Naik by Smt. Hansaben Naik Family through Mr. Nirav Khandubhai Naik   | Devdha      | 4200    |
| 63   | Smt.Kamlaben Morarbhai Rathod   | Ashtgam     | 4000    |
| 64   | In memory of late Mrs.Induben Moghabhai Naik by Mr. Bankimbhai Moghabhai Naik                                       | Pipaldhara  | 4000    |
| 65   | Shri Gunvantbhai Devchandbhai Patel C/o Bhramani Agro Center  | Rankuva     | 3100    |
| 66   | In memory of late Mrs.Kamlaben H.Desai & late Mrs.Savitaben G.Desai by Mrs. Ramilaben Rajendrabhai Desai            | Pipaldhara  | 3000    |
| 67   | In memory of late Mrs.Sukhiben Haribhai Patel (Sadkpor) by Mrs. Kamlaben Uttambhai Patel                            | Vasan       | 2500    |
| 68   | In memory of late Mr.Somabhai Raghabhai Patel by Mr. Kiritbhai Somabhai Patel                                       | Suthvad     | 2500    |
| 69   | Shri Surat Jilla Leuva Patidar Samaj by Shri Babubhai Maganbhai Patel (Rundhwada)                                   | Bardoli     | 2500    |
| 70   | In memory of late Mrs.Shantaben Kasanji (Mangubhai) Desai C/o Mr. Jitendrakumar K.Desai                             | Gandeva     | 2111    |



| S.N. | Name of Donor  | Address      | Amount. |
|------|--|--------------|---------|
| 71   | In memory of late Mrs.Kamuben Ramanlal Desai by Mr.Shirishbhai Ramanlal Desai                                      | Navsari      | 2100    |
| 72   | On Occasion of "Parth Nileshkumar Shah's Birthday C/o Mr. Rahulkumar J.Shah  | Khaparia     | 2100    |
| 73   | In memory of late Mrs.Poonam V.Dansingani by Mr. Manohar V.Dansingani  | Pune         | 2100    |
| 74   | On Occasion of "Kiyans's Birthday by Mr. Divij Vinodbhai Shah  | Ahmedabad    | 2100    |
| 75   | In memory of late Shri.Hirensinh B.Parmar by Mr. Balvantsinh G.Parmar  | Ranverikalla | 2100    |
| 76   | In memory of late Mrs. Kusumben Sumantra Mehta by Mr. Ketanbhai S. Mehta   | Gandeva      | 2100    |
| 77   | On occasion of "Riaan's Birthday by Mr. Krunal Kirankumar Shah   | Bilimora     | 2100    |
| 78   | On occasion of "Priyanka's" Birthday C/o Ms. Neha Nimeshbhai Vimawala  | Navsari      | 2100    |
| 79   | In memory of late Mr. Ishwarbhai Naik by Mr. Akhilbhai I.Naik  | Mumbai       | 2100    |
| 80   | Lion Ramesh Chopra   | Surat        | 2100    |
| 81   | Mrs. Anjana Salia  | Mumbai       | 2100    |
| 82   | In memory of late Mr.Natubhai Maganlal Desai by Mr.Yachit Parimalbhai Desai  | Vasan        | 2100    |
| 83   | In memory of late Mr.Rajubhai Shah by Mrs.Pannaben R.Shah  | Navsari      | 2100    |
| 84   | Mr. Ketanbhai A.Patel  | Vadsangal    | 2100    |
| 85   | In memory of late Mr.Ramanlal Ratanji Patel by Mrs. Chanchalben Ramanbhai Patel                                    | Gadat        | 2100    |
| 86   | In memory of late Mr.Bhanabhai Durlabhbhai Patel by Mrs. Laxmiben Bhanabhai Patel                                  | Manekpor     | 2100    |
| 87   | In memory of late Mr. Devabhai Naranji Patel & late Mrs.Kunvarben Devabhai Patel by Mr.Vallabhbhai Devabhai Patel  | Endhal       | 2100    |
| 88   | Mr.Rajendrakumar Haribhai Desai  | Pipaldhara   | 2000    |
| 89   | In memory of late Mr. Morarjibhai Desai & late Mrs.Paliba by Mr Shubhashbhai M.Desai                               | Rankuva      | 2000    |
| 90   | In memory of late Mrs.Maniben M.Naik & late Mr.Mohanlal (Bhikhubhai) Paragji Naik by Mr. Maheshbhai Mohanbhai Naik | Pipaldhara   | 1000    |
| 91   | In memory of late Mr.Nanubhai V.Patel & late Mrs. Revaben N.Patel by Mrs. Jashuben Harshadbhai Patel               | Duvada       | 2000    |
| 92   | Mrs. Yoginiben D.Patel   | Khaparia     | 1100    |
| 93   | Shri Bhaveshbhai Rajendrabhai Desai  | Pipaldhara   | 1100    |
| 94   | In memory of late Mrs.Pushpaben Vanechand Shah by Mr .Kiritbhai V.Shah   | Udvada       | 1100    |
| 95   | In memory of late Mr.Ramanbhai Dedhabhai Patel by Mr. Sandipbhai Ramanbhai Patel                                   | Gandevi      | 1100    |
| 96   | Mr Kishorbhai R.Naik   | Amalsad      | 1000    |
| 97   | Mrs.Vimalaben Khetabhai Nakrani  | Kharel       | 1000    |
| 98   | Mr. Hirenkumar Ghelabhai Patel   | Undhval      | 1000    |
| 99   | In memory of late Mr.Dhirubhai D.Mehta by Mrs.Shobhnaben M.Naik  | Pipaldhara   | 1000    |
| 100  | Mrs. Kalpanaben Ashokbhai Mehta  | Dahanu       | 900     |
| 101  | Mr. Mohammad Javed Harun Malkani   | Bilimora     | 500     |
| 102  | Mr. Kapilbhai Narang   | Surat        | 500     |
| 103  | Mr.Surendrasingh Thakur  | Surat        | 500     |

### Donation from Abroad April-2022 to September-2022

| Sr.No | Name of Donor   | Address  | Amount. In Rs. |
|-------|---|----------|----------------|
| 1     | Gram Seva Foundation  | USA      | \$200,000      |
| 2     | "Bachubhai Dhamdachha Memorial Fund" C/o Mr Dilipbhai Desai | USA      | 97400.42       |
| 3     | "Bachubhai Dhamdachha Memorial Fund" C/o Mr Dilipbhai Desai | USA      | 63180.63       |
| 4     | Dr Gira Kanitkar C/o Mr Rushikesh Desai                     | USA      | 32000          |
| 5     | The Shamdasani Foundation                                   | Hongkong | 30000          |



## Donation in Kind

| Sr. No | Name of Donor   | Address          | Particulars  |
|--------|---|------------------|--|
| 1      | Mr. Janakbhai Desai, Ms. Shilpaben Desai, Ms. Alkabhai Desai, Mr. Ronakbhai Dabhi                       | Surat            | Stationery & games- "Parodh" Balawas   |
| 2      | Friends of Tibet c/o Mr. Sudarshanbhai Arch-Dharampur   | Mumbai           | N 95 Masks- 1200 nos   |
| 3      | Mrs. Hansaben Jaybhai Shah  | Khaparia         | White Cloth- 322 Mtr   |
| 4      | Shree Samast Leuva Patidar Samaj Trust  | Navsari          | 3 Oxygen Concentrators, 5 Pulse Oximeters, 5 Infrared Thermometer and 490 PPE Kits |
| 5      | Desai Foundation  | Navsari          | 100 PPE Kits, 1280 Covid-19 AG Rapid Test Kits, 500 Hygiene Kits                   |
| 6      | In memory of Late Mr. Kirankumar K. Shah & Late Mrs. Kusumben K. Shah by Mr. Kavinchandra Maneklal Shah | Bilimora         | 1 Oxygen Concentrator & 2 Portable UVC   |
| 7      | In memory of Late Mr. Maganbhai B. Patel by Mrs. Taraben Maganbhai Patel                                | Moti Kharod      | 1 Oxygen Concentrator & 1 Asthalin Machine   |
| 8      | Vision Enterprice c/o Mr. Jigarbhai Naik  | Navsari          | Hand Sanitizer 5 liter cans - 10 nos   |
| 9      | Tiny Smiling Foundation c/o Mr. Arun Patel (USA) through Mr. Kuched Gram Seva Trust, Vesma              | U.S.A            | 2 BIPAP Machines and 1 Ventilator  |
| 10     | Mr. Parag Vora & Ms. Bharti Vora c/o Santokba & Pramkorba Charitable Trust                              | Mumbai           | 1 Oxygen Concentrator  |
| 11     | Mr. Gauravbhai Naik through Mr. Mehulbhai, V.N Automation   | Navsari          | 2 UV Sanitizer Boxes   |
| 12     | Dr. Jagruti Desai   | Navsari          | 10 Pulse Oximeters   |
| 13     | N. J. Group Mr. Jigneshbhai Desai & Mr. Nirajbhai Desai c/o Mr. Piyushbhai Desai (MLA)                  | Surat<br>Navsari | 2 Oxygen Concentrators   |
| 14     | Meril Diagnostics Pvt. Ltd.   | Vapi             | Laboratory kits  |
| 15     | Shree Baldevdas Charitable Trust, Manav Parivar SevaTirth   | Matar            | Medicines  |
| 16     | Dr. Varsha Shah, Koshish Milap Trust  | Vadodara         | 480 packets of ORS   |
| 17     | Mr. Nitin Nareshkumar Shah  | Surat            | 3000 Masks   |
| 18     | Seva International  | USA              | 35 Finger Pulse Oximeters & 35 Digital Thermometers                                |
| 19     | Mr. Guptachandra R. Shah  | Mumbai           | Clothes  |
| 20     | Ms. Tanvisan & Ms. Monika Gupta   | Surat            | Books for "Parodh" Balawas Library   |
| 21     | Sidmak India  | Valsad           | Medicines  |
| 22     | Mr. Ashokbhai Patel   | Soldhara         | Saplings   |
| 23     | Imana c/o Dua Foundation, Mr. Imtiaz Jaleel   | Aurangabad       | 12 Oxygen Concentrators, 12 Converters and 2 Ventilators                           |
| 24     | Mr. KetanKumar Jasvantsinh Dasodi   | Navsari          | Books and toys   |
| 25     | Mr. Naginbhai Parbhubhai Patel  | Khapariya        | 1 BP measuring machine and 2 Thermometers  |
| 26     | Mrs. Lataben Ishwarlal Mehta by Prakashbhai (USA) (Navsari)   | Amalsad          | Utensils   |
| 27     | Mr. Bhaveshbhai Doda  | Surat            | Stationery   |
| 28     | Mrs. Shilpaben Desai  | Surat            | Notebooks  |
| 29     | Mr. Janakbhai Dhirajlal Maheta  | Pipaldhara       | 1 Air Mattress   |
| 30     | Rotary Club of Navsari  | Navsari          | Books, toys and old Clothes  |



| Sr. No | Name of Donor   | Address     | Particulars                                     |
|--------|---|-------------|---|
| 31     | Mr. Durlabhbbhai Govindji Patel (USA) c/o Mr. Umeshbhai Patel | Khapariya   | Utensils  |
| 32     | Ms. Jyoti Naik  | USA         | Sarees  |
| 33     | Mr. Shantilal Chauhan   | U .K        | Clothes   |
| 34     | Dr. Upendrabhai B. Kalaigar                                   | Surat       | 40 sets of stationery and 36 towels and napkins |
| 35     | Mr. Manojbhai Mistry, Ambi Enterprice                         | Bilimora    | 35 litres Lubricant Oil                         |
| 36     | Mrs. Ayesha & Mr. Abdul kadar Musabhai Tai (U.K)              | Amalsad     | Clothes   |
| 37     | Mr. Nimesh Vashi c/o Mr. Rajanikant Naik (Amalsad)            | Kacholi     | Dettol  |
| 38     | Mr. Darius Batliwalla   | U.S.A       | 56 Study desks                                  |
| 39     | Mrs. Sarojini V. Tevar  | Surat       | Mats  |
| 40     | Mr. Dineshbhai Shah   | U.S.A       | Medical and Surgical Equipment                  |
| 41     | Sewa Rural  | Zhagadia    | Medicines                                       |
| 42     | Mr. Rakeshbhai Kantilal Shah                                  | Saribujrang | Utensils  |
| 43     | Mr. Venilal Modi  | Pal         | Books and toys                                  |
| 44     | Mr. Dileep Acharya  | Vadodara    | Tools for Kitchen gardening                     |

## Donation in Kind for Kitchen

| Sr.No | Name of Donor   | Address         | Particulars   |
|-------|---|-----------------|---|
| 1     | Shri Umedbhai Gulsingbhai Chaudhry                                  | Mahuva          | Wheat 10 Kg, Rise 50 Kg                               |
| 2     | Shri Haribhai Gulabbhai Mistry                                      | Gandeva         | Turmeric -5 Kg  |
| 3     | Shri Sanjaybhai Maganbhai Naik                                      | Gandeva         | Green gram 30 Kg, Tamarind 10 Kg                      |
| 4     | Shri Jitendrakumar Narottambhai Lad (Bhavin) 3D Paramji Creation    | Bilimora        | Rice 25 Kg  |
| 5     | Shri Thakorbbhai Jagjivandas Darji                                  | Rankuva         | Rice 25 Kg, Pulse 5 Kg, Oil                           |
| 6     | Mrs. Hemangiben Dipakbhai Patel                                     | Vadi (Baroliya) | Rice 30 Kg, Pulse 3 Kg                                |
| 7     | Shri Shantilal B. Sharma & Smt. Kamalaben S. Sharma                 | Chikhli         | Rice 25 Kg, Pulse 25 Kg, Salt 25 Kg, Oil, Spices Etc. |
| 8     | Shri Roshanlal S. Sharma  | Chikhli         | Jaggery 18 Kg, Sesame Seeds 5 Kg                      |
| 9     | Shri Dhananjaybhai Desai (Bharatbhai)                               | Valsad          | Jaggery 100 Kg  |
| 10    | Smt. Sarojiniben V. Tevar   | Surat           | Sugar 52.5 Kg   |
| 11    | In Memory Of Late Mrs. Hansaben Hiteshbhai Patel by Family          | Sarikhurad      | Rice 40 Kg  |
| 12    | Smt. Jagruti Sureshbhai Patel c/o Shri Dilipkumar Bhagubhai Patel   | U.K             | Rice 100 Kg, Pulse 10 Kg, Spices                      |
| 13    | Smt. Manuben M. Mistry c/o Shri Bhagubhai Kesavbhai Patel (Samroli) | U.K             | Oil 5 Ltr, Wheat 100 Kg                               |



## Gram Seva Foundation Annual Honor Roll of Donors

( 1st April 2021 to 31st March 2022)

We are pleased to recognize these generous individuals and organizations whose gifts help us sustain our Mission of Healing, Nurturing, Educating and Empowering.

( We strive to be accurate and complete. Please inform us of any errors and accept our apologies for any oversight)

### \$10,001 and Above

| Last Name  | First Name                    | City            | State | Sum of Donation |
|--|-------------------------------|-----------------|-------|-----------------|
| Desai  | Manjula & Mahendra            | Sugar Land      | TX    | \$30,000.00     |
| Desai  | Shirish                       | San Jose.       | CA    | \$27,000.00     |
| ALPHA MEDTHRIFT SCIENTIFIC CO. Nayna & Dinesh Shah | ALPHA MEDTHRIFT SCIENTIFIC CO | Frankfort       | IL    | \$25,000.00     |
| Batliwalla   | Daraius                       | Fullerton       | CA    | \$22,501.00     |
| Fogel  | Leslie                        |                 |       | \$20,120.83     |
| Shah   | Nayna and Dinesh              | Elgin           | IL    | \$20,101.00     |
| Patel  | Angela & Virendra             | Gulf Shores     | AL    | \$20,000.00     |
| Desai  | Bharati & Mukesh              | Roselle         | IL    | \$20,000.00     |
| Megha Food   |                               | Manchester      | NH    | \$20,000.00     |
| Shah   | Jessica & Mayur               | Chicago         | IL    | \$20,000.00     |
| Leininger  | Pat & Bernard                 | Clarendon Hills | IL    | \$13,000.00     |
| Puri   | Veena                         | Freemont        | CA    | \$11,000.00     |
| Shah   | Nikita & Sanjay               | Frankfort       | IL    | \$11,000.00     |
| Fisher   | Robert                        | Prescott        | AZ    | \$10,400.00     |
| Fanucci  | Susan & Alfiero               | Andover         | MN    | \$10,050.00     |
| Patel  | Swetal                        | Skokie          | IL    | \$10,002.00     |
| Patel  | Roda & Khushroo               | Northbrook      | IL    | \$10,001.00     |
| Patel  | Michael                       | Skokie          | IL    | \$10,001.00     |
| Patel  | Rakesh                        | Skokie          | IL    | \$10,001.00     |

### \$5001 and \$10,000

| Last Name | First Name                       | City          | State | Sum of Donation |
|-----------|----------------------------------|---------------|-------|-----------------|
| Desai     | Divya & Mayur                    | Piscataway    | NJ    | \$10,000.00     |
| Mehta     | Kayomarsh                        | Burr Ridge    | IL    | \$10,000.00     |
| Shah      | Rekha & Arvind                   | Elgin         | IL    | \$9,000.00      |
| Qadeer    | Shazia & Imran                   | Lincolnwood   | IL    | \$8,000.00      |
| Shah      | Monica & Sachin                  | Bartlett      | IL    | \$7,500.00      |
| Jain      | Jignesh                          | Bartlett      | IL    | \$6,000.00      |
| Shah      | Usha & Hitesh                    | Schaumburg    | IL    | \$5,500.00      |
| Desai     | Harsha & Mukesh Desai Foundation | Wesley Chapel | FL    | \$5,231.00      |
| Naik      | Sumeru D.                        | Elmwood Park  | NJ    | \$5,001.25      |

**\$3001 and \$5000**

| Last Name                                     | First Name              | City             | State | Sum of Donation |
|---|-------------------------|------------------|-------|-----------------|
| Bhatia  | Seema & Raj             | Lake Forest      | IL    | \$5,000.00      |
| Desai   | Sarojini & Harshadrai   | Bloomfield Hills | MI    | \$5,000.00      |
| Vakharia                                      | Cainaz & Michael Heaton | Olney            | MD    | \$5,000.00      |
| ESM Technologies LLC dba<br>Stratum nutrition |                         | Carthage         | MO    | \$5,000.00      |
| Mehta   | Dhun                    | Arlington Hts    | IL    | \$5,000.00      |
| Shah  | Mansi & Archit          |                  |       | \$5,000.00      |
| Desai   | Jahanvi & Deval         | Farmington Hills | MI    | \$4,500.00      |
| Desai   | Devya Naik & Anil       | Georgetown       | TX    | \$4,000.00      |
| Chami   | Kharmen & Rostam        | Cerritos         | CA    | \$4,000.00      |
| Anonymous                                     |                         |                  |       | \$3,500.00      |
| Desai   | Mita & Narendra         | Schaumburg       | IL    | \$3,001.00      |

**\$1001 and \$3000**

| Last Name  | First Name              | City          | State | Sum of Donation |
|------------|-------------------------|---------------|-------|-----------------|
| Shah       | Darshana & Pradip       | Elgin         | IL    | \$3,000.00      |
| Patel      | Kalpesh                 | Snellville    | GA    | \$2,500.00      |
| Patel      | Kanta & Prabhu          | Encinitas     | CA    | \$2,500.00      |
| Shah       | Kusum & Mehendra        | Streamwood    | IL    | \$2,500.00      |
| Bozicevich | Roxie & Jay             | Golden Valley | MN    | \$2,072.01      |
| Bilimoria  | Bachi                   | Northbrook    | IL    | \$2,002.00      |
| Desai      | Stuti                   | Rochester     | MN    | \$2,000.00      |
| Fanucci    | Rita & Lauro            | Anoka         | MN    | \$2,000.00      |
| Naik       | Ela & Ishwar            | Ypsilanti     | MI    | \$2,000.00      |
| Shah       | Trish & Biren           | Princeton     | NJ    | \$2,000.00      |
| Dykema     | Catherine Morgan & Dale | Holland       | MI    | \$2,000.00      |
| Naik       | Nisha & Sanjeev         | Troy          | MI    | \$1,502.00      |
| Thakkar    | Ajit                    | Sugar land    | TX    | \$1,500.00      |
| Reddy      | Lakshmi & Viswanatha    | Burr Ridge    | IL    | \$1,500.00      |
| Patel      | Urvi & Jagdishbhai      | Roselle Park  | NJ    | \$1,500.00      |
| Patel      | Dayabhai                | Laurel        | MD    | \$1,500.00      |
| Shah       | Charumati & Vasant      | Lincoln Wood  | IL    | \$1,500.00      |
| Shah       | Jayshree & Parag        | Schaumburg    | IL    | \$1,200.00      |
| Smith      | Aileen & Michael        | St. Francis   | MN    | \$1,200.00      |
| SHAH       | MANJU & KUMARPAL        | BOWLING GREEN | KY    | \$1,111.00      |
| Puri       | Varsha M.               | Los Angeles   | CA    | \$1,051.00      |
| Naik       | Sanjeev                 | Troy          | MI    | \$1,001.00      |
| Daruwalla  | Katy & Noshir           | Northbrook    | IL    | \$1,001.00      |
| Patel      | Perviz                  | Peoria        | AZ    | \$1,001.00      |



### \$501 and \$1000

| Last Name        | First Name          | City              | State | Sum of Donation |
|------------------|---------------------|-------------------|-------|-----------------|
| Trivedi          | Chintan             |                   |       | \$1,000.00      |
| Johnson          | Elaine              | Northbrook        | IL    | \$1,000.00      |
| Patel            | Dainisha & Vasant   | Skokie            | IL    | \$1,000.00      |
| Khandwala        | Bela & Narendra     | Elk Grove Village | IL    | \$1,000.00      |
| Anand            | Hansa & Baldev      | Jonesboro         | GA    | \$1,000.00      |
| Patel            | Shakuntala & Ramesh | Hammond           | LA    | \$1,000.00      |
| Vyas             | Neha & Sanjay       | Pepper Pike       | OH    | \$1,000.00      |
| Mehta            | Kim & Hosi          | Elmhurst          | IL    | \$1,000.00      |
| Shah             | Meena & Nitin       | Oak Brook         | IL    | \$1,000.00      |
| Patel            | Rupal & Jaideep     | Athens            | GA    | \$1,000.00      |
| Shah             | Baiju               | Houston           | TX    | \$1,000.00      |
| Meredith         | Michael             | West Paducah      | KY    | \$1,000.00      |
| Lura             | Mark                | Barrington        | IL    | \$1,000.00      |
| Dastur           | Margaret            | HOFFMAN ESTATE    | IL    | \$1,000.00      |
| Lee              | Rodney              | Falls Church      | VA    | \$1,000.00      |
| Network for Good |                     | Washington        | DC    | \$773.00        |
| Patel            | Melanie & Shiraz    | Paducah           | KY    | \$550.00        |
| Vashi            | Ragini & Tushar     | Novi              | MI    | \$501.00        |
| Shah             | Krupa               | Mokena,           | IL    | \$501.00        |
| Paralikar        | Sushma & Subhash    | Gailsburg         | IL    | \$501.00        |

### \$251 and \$ 500

| Last Name  | First Name                 | City           | State | Sum of Donation |
|------------|----------------------------|----------------|-------|-----------------|
| Levitan    | Judith A.                  | St. Louis Park | MN    | \$500.00        |
| Mehta      | Charul & Bhadresha         | Chicago        | IL    | \$500.00        |
| Mehta      | Tushad                     | Chicago        | IL    | \$500.00        |
| Agrawal    | Avni & Manoj               | Orland Park    | IL    | \$500.00        |
| Vashi      | Kaumudini & Ajit           | Novi           | MI    | \$500.00        |
| Powers     | Sima & Johnathan           | Chicago        | IL    | \$500.00        |
| Bovie-Ware | Premila Anklesaria & Frank | Yorba Linda    | CA    | \$500.00        |
| Shah       | Reshma & Vipul             | Palatine       | IL    | \$500.00        |
| Shah       | Minaxi and Manoj           | East Lansing,  | MI    | \$500.00        |
| shah       | Malini & Samir             | Wayne          | NJ    | \$500.00        |
| Daroowala  | Roshen & Nano              | Houston        | TX    | \$500.00        |
| Shroff     | Vera & Pesi                | Ottawa         | ONT   | \$500.00        |
| Patel      | Varsha & Nick              | Boonville      | MO    | \$500.00        |
| Patel      | Susan & Farhad             | Evanston       | IL    | \$500.00        |
| Patel      | Sobhnaben & Mohanbhai      | Beeville       | TX    | \$500.00        |
| Vachhani   | Bharti & Pradip            | Bourbonnais    | IL    | \$500.00        |
| Desai      | Hiral                      | Lexington      | MA    | \$500.00        |



| Last Name                      | First Name        | City              | State | Sum of Donation |
|--------------------------------|-------------------|-------------------|-------|-----------------|
| Patel                          | Mukundrai         | Fremont           | CA    | \$500.00        |
| Patel                          | Salma and Shabir  | Columbus          | OH    | \$500.00        |
| Sukhadia                       | Ajaykumar         | Frankfort         | IL    | \$400.00        |
| Apte                           | Meena & Chidanand | Chappaqua         | NY    | \$360.00        |
| Shah                           | Nipa & Manish     | Algonquin         | IL    | \$301.00        |
| Dave                           | Miraj             |                   |       | \$300.00        |
| Desai                          | Shila & Mehul     | Pearland          | TX    | \$300.00        |
| Darukhanawalla                 | Villoo & Viraf    | Hoffman Estates   | IL    | \$300.00        |
| Deibel                         | Diana             | Chicago           | IL    | \$300.00        |
| Strong                         | Patricia & Dennis | Northbrook        | IL    | \$300.00        |
| Engineer                       | Beverly           | Sturgeon Bay      | WI    | \$300.00        |
| Desai                          | Shobha & Ramesh   | Harrisburg        | PA    | \$300.00        |
| Benevity Community Impact Fund |                   |                   |       | \$294.00        |
| Patel                          | Jayaben           | Elgin             | IL    | \$251.00        |
| Desai                          | Kokila & Hitendra | Arlington Heights | IL    | \$251.00        |
| Shah                           | Nisha and Gautam. | Schaumburg.       | IL    | \$251.00.       |

**\$101 and \$ 250**

| Last Name  | First Name         | City             | State | Sum of Donation |
|------------|--------------------|------------------|-------|-----------------|
| Beri       | Neethi & Abhimanyu |                  |       | \$250.00        |
| Desai      | Rantim             |                  | MI    | \$250.00        |
| Jain       | Ramita             | Park Ridge       | IL    | \$250.00        |
| Desai      | Ansh               | Weymouth         | MA    | \$250.00        |
| Mani       | Srinivasa          | Farmington Hills | MI    | \$250.00        |
| Ghandhi    | Shireen & Firoz    | Novi             | MI    | \$202.00        |
| Kothari    | Bharatkumar        | Streamwood       | IL    | \$202.00        |
| Hormuzdiar | James              | Manhattan        | NY    | \$201.00        |
| Hormuzdiar | Bill               |                  |       | \$201.00        |
| Mody       | Armaiti            | Orangevale       | CA    | \$201.00        |
| Vazifdar   | Aban & Pesi        | Bolingbrook      | IL    | \$201.00        |
| Gidwani    | Sheila             | Duncanville      | TX    | \$200.00        |
| Naik       | Vivek              |                  |       | \$200.00        |
| Lal        | Jagdish R.         | Beeville         | TX    | \$200.00        |
| Vora       | Nila & Manu        | Naperville       | IL    | \$200.00        |
| Bozicevich | Pat & Jeff         | Champlin         | MN    | \$200.00        |
| Apte       | Alpana             |                  |       | \$200.00        |
| Vashi      | Chintan            | Spring           | TX    | \$200.00        |
| Savdharia  | Lina               |                  |       | \$200.00        |
| Merchant   | Nawaz & Hosi       | Ringoes          | NJ    | \$200.00        |
| Jamsetjee  | Kashmira & Rumi    | Bolingbrook      | IL    | \$200.00        |
| Choksi     | Dhruti             |                  |       | \$200.00        |



| Last Name  | First Name           | City              | State | Sum of Donation |
|------------|----------------------|-------------------|-------|-----------------|
| Patel      | Kapila & Jayant      | Richmond          | TX    | \$151.00        |
| Shah       | Mahendra             | Des Plaines       | IL    | \$150.00        |
| Nagarwalla | Pheroze              | St. Charles       | IL    | \$150.00        |
| Edalji     | Arnavaz & Rohinton   | Wadsworth         | IL    | \$150.00        |
| Nayak      | Bhadresh             | Sterling Heights, | MI    | \$147.00        |
| Gummadi    | Krishna              |                   |       | \$137.00        |
| Press      | Zarine & Minoo       | Schaumburg        | IL    | \$101.00        |
| Jain       | Gaurav & Saloni Shah | Streamwood        | IL    | \$101.00        |
| Patel      | Maharukh & Daraius   | Hoffman Estates   | IL    | \$101.00        |
| Shah       | Hansa & Samprati     | Elk Grove Village | IL    | \$101.00        |
| Darji      | Bhavika & Ritesh     | Morton Grove      | IL    | \$101.00        |
| Desai      | Boman                |                   |       | \$101.00        |
| Master     | Mahazabeen & Ariz    | Hoffman Estates   | IL    | \$101.00        |

### Upto \$100

| Last Name     | First Name         | City            | State | Sum of Donation |
|---------------|--------------------|-----------------|-------|-----------------|
| Tioleco-Cheng | Melanie            |                 |       |                 |
| Choksey       | Meher & Kersi      | Lombard         | IL    |                 |
| Batlivala     | Dhun               | Clarksville     | TN    |                 |
| Basu          | Tapendu            | Lutherville     | MD    |                 |
| Alvi          | Zishan             | Chicago         | IL    |                 |
| Shroff        | Nirmala & Ramesh   | Bartlett        | IL    |                 |
| Shah          | RakeshKumar        |                 |       |                 |
| Shah          | Alpa & Durgesh     | Lake Zurich     | IL    |                 |
| Nigro         | Carol              | Oak Brook       | IL    |                 |
| Mehta         | Nandan             |                 |       |                 |
| KOTHARI       | Manisha and Nilesh | Naperville      | IL    |                 |
| Yamada        | Anita & Isshi      | Evanston        | IL    |                 |
| Desai         | Chandrakant        |                 |       |                 |
| Press         | Piroja & Rusi      | Ramsey          | NJ    |                 |
| Mulopulos     | Sam                | Park Ridge      | IL    |                 |
| Kotval        | Yasmin & Cyrus     | Danville        | CA    |                 |
| Desai         | Saroj & Nalinkumar | Lexington       | MA    |                 |
| Patel         | Mayuri & Sukumar   | Indianapolis    | IN    |                 |
| Rao           | Sheela             | La Crescenta    | CA    |                 |
| Patel         | Kinjal             |                 |       |                 |
| Nuguri        | RajaRamesh         | Troy            | MI    |                 |
| Blum          | Carleen & Richard  | Prescott,       | AZ    |                 |
| Craver        | Nancy & Stephen    | Minnetonka      | MN    |                 |
| Desai         | Mahesh             | Farmingtn Hills | MI    |                 |
| Pooniwala     | Rashna & Adil      | Glenview        | IL    |                 |



| Last Name | First Name             | City           | State | Sum of Donation |
|-----------|------------------------|----------------|-------|-----------------|
| Mehta     | Pravin                 | Sugar Land     | TX    |                 |
| Birkholz  | Julia Mickenberg & Dan | Austin         | TX    |                 |
| Hiremath  | Veeresh                |                |       |                 |
| Govea     | Annie                  | Frankfort      | IL    |                 |
| Joshi     | Dhaval                 | Hinsdale       | IL    |                 |
| Khare     | Kumkum & Pranveer      |                |       |                 |
| Wiczer    | Sandra & Daniel        | Buffalo Grove, | IL    |                 |
| Patel     | Tejas                  | Allen          | TX    |                 |
| Cama      | Shernaz & Farhad       | Pittsburgh     | PA    |                 |
| Blumeneau | Gisela                 | Winnetka       | IL    |                 |
| Sinor     | Dara A.                | Mt. Pleasant   | SC    |                 |
| Schubert  | Katieqr                |                |       |                 |
| Burke     | Scott                  | Nashville      | TN    |                 |
| Anand     | Indu Mati & Yogindra   | Chelmsford     | MA    |                 |
| Weisbach  | Naomi & Jay            | Deerfield      | IL    |                 |
| Beierle   | Ina & John             | Glencoe        | IL    |                 |
| Rabadiya  | Dhaval Kumar           | San Antonio    | TX    |                 |
| Chauhan   | Pramod                 | Waltham        | MA    |                 |
| Vargas    | Dina                   | Riverside      | CA    |                 |
| Molayem   | Jennifer               |                |       |                 |
| Almeida   | Nikesh                 |                |       |                 |
| Salvi     | Payal                  |                |       |                 |
| Sampath   | Venkatavaradhan        |                |       |                 |



## AUDITORS' REPORT

(Under sub section (2) of section 33 and 34 and Rule 19 of the Bombay Public Trust Act 1950)

Registration No. : E/896/Navsari

Name of the Trust : GRAM SEVA TRUST

For the year ended : 31st March 2022

We have audited the annexed Balance sheet of GRAM SEVA TRUST [(Reg.No E/896/ Navsari) situated at : N. H. No. 48, At & Post: Kharel, Dist: Navsari 396430] as on 31st March 2022 as well as Income and Expenditure Account for the year ended on 31st March 2022.

We have conducted our audit in accordance with auditing standards generally accepted in India. These standards require that we plan and perform the audit to obtain reasonable assurance about whether the financial statements are free of material misstatement.

- The accounts are maintained regularly and in accordance with the provisions of the Act and Rules
- The receipts and disbursements are properly and correctly shown in the accounts
- The cash balance and vouchers in the custody of the treasurer or trustee on the date of the audit were in agreement with the books of account
- All books, deeds, accounts, vouchers or other documents & records required by us were produced before us.
- A Register of movable and immovable properties has been maintained and the changes therein have been furnished to us.
- All the necessary information required by us has been furnished to us by the Trustees personally whenever called upon
- No property or funds of the Trust were applied for any object or purpose other than for the object or purpose of the Trust
- There are no amounts which are outstanding for more then one year and written off
- For repairs, tenders are not invited but for construction involving expenditure exceeding ₹ 5000/-, tenders are invited
- The money of the trust have not been invested contrary to the provisions of section 35 of the Act.
- There is no alienation of the immovable property contrary to provisions of Section 36
- There are no cases of irregular, illegal or improper expenditure or failure or omission to recover money or other property belonging to the public trust or of loss or waste of money or other property thereof.
- The provision of Budget to be filed under Rule in the form under Rule 16A is not applicable to the trust. However, the Trust has policy to prepare the Annual Budget.
- The maximum and minimum number of trustees is maintained during the year.
- The meetings are held as provided by such instrument.
- The Minutes Books of proceedings of the meetings are maintained.
- None of the Trustees has any interest in the investment of the trust.
- None of the trustees is any debtor or creditor of the trust.
- The irregularities pointed out by the Auditors in the accounts for the year under audit are have been duly complied with by the trustees.
- There is no special matter, which we think fit or necessary to bring to the notice of the Deputy or Assistant Charity Commissioner

Address :

D.D.Desai & Associates

Chartered Accountants

G/2, SunShine Apt.,

Ratanji Ni Wadi, Near Bai Avabai High School,

Halar Road, Valsad 396 001 Gujarat

Tel. : 02632-243737

For D.D.Desai & Associates,

Chartered Accountants

D. D. Desai (Proprietor)

M. No.: 042031

F.R. No. : 102297W

Place : Valsad

Date : 10-09-2022



## Gram Seva Trust

Registration No.: E/896/Navsari

### Balance Sheet As on 31-03-2022 (Schedule - VIII)

| Previous Year<br>31-March-2021 | FUNDS & LIABILITIES              | SCH. NO. | Current Year<br>31-March-2022 | Previous Year<br>31-March-2021 | PROPERTIES & ASSETS                 | SCH. NO. | Current Year<br>31-March-2022 |
|--------------------------------|----------------------------------|----------|-------------------------------|--------------------------------|-------------------------------------|----------|-------------------------------|
| 6,656,600.00                   | Trust Fund Corpus                | 1        | 66,56,600.00                  | 83,913,577.94                  | Immovable Properties                | 5        | 9,27,41,846.94                |
| 365,745,145.74                 | Other Earmarked Funds            | 2        | 40,99,33,449.74               | 47,952,799.00                  | Movable Properties                  | 6        | 5,51,44,710.95                |
| 6,049,279.00                   | Current Liabilities & Provisions | 3        | 61,09,333.07                  | 205,778,085.54                 | Investments                         | 4        | 23,96,09,000.00               |
|                                |                                  |          |                               | 10,766,153.80                  | Cash & Bank Balances                | 7        | 1,29,58,094.16                |
|                                |                                  |          |                               | 4,184,234.00                   | Accounts Receivables                | 8        | 24,89,625.58                  |
|                                |                                  |          |                               | 7,438,254.30                   | Advances & Deposits                 | 9        | 83,09,954.51                  |
|                                |                                  |          |                               | 1,985,975.00                   | Closing Stock of Medicines & Others | 10       | 22,54,368.00                  |
|                                |                                  |          |                               | 16,431,945.16                  | Income & Expenditure Account        |          | 91,91,782.67                  |
| 378,451,024.74                 | TOTAL ₹                          |          | 42,26,99,382.81               | 378,451,024.74                 | TOTAL ₹                             |          | 42,26,99,382.81               |



*Dr. A. A. Shah*

As per our Report of even date  
D. D. Desai & Associates  
Chartered Accountants  
D. D. Desai (Proprietor)  
M. No.: 042031  
UDIN : 22042031ARPVUL4930

Place : Valsad  
Date : 10-09-2022

Notes forming parts of account

Gram Seva Trust  
Dr. A. A. Shah (Managing Trustee)

Place : Kharel  
Date : 10-09-2022

## Gram Seva Trust

Registration No.: E/896/Navsari

### Income & Expenditure Account For the year ending on 31-03-2022 Schedule - IX

| Previous Year<br>2020-21 | EXPENDITURE                         | SCH. NO. | Current Year<br>2021-22 | Previous Year<br>2020-21 | INCOME                           | SCH. NO. | Current Year<br>2021-22 |
|--------------------------|-------------------------------------|----------|-------------------------|--------------------------|----------------------------------|----------|-------------------------|
| 1,330,711.06             | Establishment Expenses              | 14       | 14,94,649.80            | 2,61,79,919.00           | Hospital Receipts                | 11       | 4,23,85,115.00          |
| 7,643,585.00             | Depreciation                        | 5 & 6    | 83,83,628.00            | 220,125.00               | Other Receipts                   | 12       | 58,084.00               |
|                          |                                     |          |                         | 1,60,81,403.00           | Grant Received                   | 13       | 2,84,09,601.00          |
|                          | Expenditure on Objects of the Trust |          |                         | 160,929.00               | Interest on I.T. Refund          |          | 2,07,047.00             |
| 50,188,459.56            | (A) Hospital Expenses               | 15A      | 7,60,69,352.42          | 20,579,804.45            | Voluntary Donations              |          | 2,27,96,848.27          |
| 6,473,864.00             | (B) Community Health Project        | 15B      | 67,25,305.66            |                          | - Domestic : 62,07,335.00        |          |                         |
| 405,082.00               | (C) Satellite Project               | 15C      | 5,12,630.64             |                          | - International : 1,65,89,513.27 |          |                         |
| 272,416.00               | (D) Medical Camp Expenses           | 15D      | 11,80,849.00            | 646,322.40               | Interest from Other Investments  |          | 5,87,510.04             |
| 8,016,304.15             | (E) Other Project Expenses          | 15E      | 84,85,847.67            | 12,144,985.81            | Interest from Earmarked Funds    |          | 1,39,93,395.56          |
|                          |                                     |          |                         | 852,815.85               | Dividend from Earmarked Funds    |          | 16,54,824.81            |
| 2,535,882.74             | Excess of Income over expenditure   |          | 72,40,162.49            |                          |                                  |          |                         |
| 76,866,304.51            |                                     |          | 11,00,92,425.68         | 76,866,304.51            |                                  |          | 11,00,92,425.68         |



As per our Report of even date  
D. D. Desai & Associates  
Chartered Accountants  
D. D. Desai (Proprietor)  
M. No.: 042031  
UDIN : 22042031ARPVUL4930

Place : Valsad  
Date : 10-09-2022



Notes forming parts of account

Place : Kharel  
Date : 10-09-2022

Gram Seva Trust  
Dr. A. A. Shah (Managing Trustee)

*(Signature)*



## Receipt & Payment Account for the year ended 31-03-2022

| RECEIPTS                           | AMOUNT (₹)     | AMOUNT (₹)      | PAYMENTS  | AMOUNT (₹)     | AMOUNT (₹)      |
|------------------------------------|----------------|-----------------|---|----------------|-----------------|
| Opening Balance :                  |                |                 | Payments towards :  |                |                 |
| Cash on Hand                       | 92,221.00      |                 | Establishment Expenses  | 14,94,649.80   |                 |
| Balance with Bank                  | 1,06,73,932.00 | 1,07,66,153.00  | Hospital Expenses   | 7,60,69,352.42 |                 |
|                                    |                |                 | Community Health  | 67,25,305.66   |                 |
| Receipts From:                     |                |                 | Satelite Project Exp.   | 5,12,630.64    |                 |
|                                    |                |                 | Medical Camp Exp.   | 11,80,849.00   |                 |
| Donations :                        |                |                 | Other Projects Exp.   | 84,85,847.67   | 9,44,68,635.19  |
| Voluntary Donations                | 2,27,96,848.27 |                 |   |                |                 |
| Earmarked Fund Donations           | 2,31,18,836.00 |                 | Investments during the year (Net of Matured Investments)        |                | 3,38,30,914.46  |
| Capital Fund Donations             | 1,26,85,840.00 | 5,86,01,524.27  |   |                |                 |
|                                    |                |                 | Additions to Fixed Assets                                       |                | 1,61,70,180.95  |
| Other Receipts :                   |                |                 |   |                |                 |
| Hospital Receipts                  | 4,23,85,115.00 |                 |   |                |                 |
| Other Receipts                     | 58,084.00      |                 | Net Increase / Decrease in Current Assets & Current Liabilities |                | 18,23,612.92    |
| Govt. Grants Received for Expenses | 2,84,09,601.00 |                 |   |                |                 |
| Interest Received                  | 1,45,80,905.60 |                 | Closing Balance :   |                |                 |
| Dividend Received                  | 16,54,824.81   |                 | Cash on Hand  | 55,287.00      |                 |
| Interest on I.T. Refund            | 2,07,047.00    |                 | Balance with Bank   | 1,29,02,807.16 | 1,29,58,094.16  |
| I.T. Refund                        | 25,88,183.00   | 8,98,83,760.41  |   |                |                 |
|                                    |                |                 |   |                |                 |
| TOTAL                              |                | 15,92,51,437.68 | TOTAL   |                | 15,92,51,437.68 |



*[Signature]*



*[Signature]*

D. D. Desai & Associates  
Chartered Accountants  
D. D. Desai (Proprietor)  
M. No.: 042031  
F.R.No.: 102297W

Place : Valsad  
Date : 10-09-2022

Place : Kharel  
Date : 10-09-2022

Gram Seva Trust  
Dr. A. A. Shah  
(Managing Trustee)



## You can help us...

Gram Seva Trust strives for Health and Development of Rural Communities, especially, its weaker sections like women, children and the elderly.

The activities of the organization depend on donations and hence there is a perennial need of donations and help. We sincerely request you to join us in these activities through your voluntary donations in cash or kind for the following:

### Permanent Donations Scheme

1. Poor Patients Relief Fund.
  2. Eye Care Fund.
  3. Bhojnalay( Kitchen) Fund.
  4. Women Empowerment Fund.
  5. Children's Welfare Fund
  6. "Parodh Balawas" Funds
- } Interest shall be utilized from Corpus fund.
7. Anniversary Donations: these are donations on birth, death or any other anniversaries for treatment or food for the patients. The interest on the amount shall be utilised on the same day every year for the same purpose. ₹. 21000/- for this fund is accepted. The Donors name shall be displayed on a board that day.
  8. ₹. 2100/- (10 U.S.\$) for One Meal for Hospital Patients & - ₹. 3500/- (20 U.S.\$) for Two Meals
  9. ₹. 2100/- (10 U.S.\$) One Meal for "Parodh" Balawas children- ₹. 3500/- (30 U.S.\$) for Two Meals
  10. ₹. 500/- (5 U.S.\$) for Milk for one time for "Parodh" Balawas Children of Hospital Patients & ₹. 1000 (10 U.S.\$) for Two time.
  11. Eye Camp- An eye camp and free cataract operations of all those coming in the camp are organised on donation of ₹. 40000/- ( 800 U.S.\$) and ₹. 1500/- (25 U.S.\$) for one cataract operation.
  12. Support Education Expense of One Parodh Balawas Child: ₹.36000/year (600 U.S.\$/year)
  13. General Donation

We also need donations for hospital and Balawas equipment. Kindly contact our office for more information.

We shall be happy to receive voluntary services in any of our activities like child education, skill development of youth and women, development of database, IEC materials, library, documentation etc.

Donations can be sent through cheques, demand drafts or direct transfer, in the name of Gram Seva Trust.

All donations are tax exempted under 80G in India.

Donations in U.S.A, can avail tax exemption if donated to Gram Seva Foundation a 501(c)(3) tax exempt charitable non profit.

|  |   |
|--|---|
| <b>GRAM SEVA TRUST</b><br>Kharel, N.H. No. 48, Ta. Gandevi,<br>Dist. Navsari - 396 430<br>Ph. 02634-246248, 246362, Mo. 76980 05915<br>email - gram_seva@yahoo.com<br>gstkharel@yahoo.com<br>www.gramsevatrust.org | <b>GRAM SEVA FOUNDATION</b><br>C/o Dr. Khushroo Patel +1(847)809-7719<br>Dineshbhai Shah +1(708)372-1748<br>2030, Post Road, North Brook<br>IL - 60062 - 6204, USA<br>email - rodak@aol.com<br>www.gramseva.org |
| <b>For Local Donations</b><br>Bank of Baroda, Kharel Branch<br>Account No.34220100011566<br>IFSC Code : BARB0KHAREL  | <b>For Donations from Abroad</b><br>State Bank of India, New Delhi Main Branch.<br>Account No. 40133695833<br>IFSC Code : SBIN0000691<br>Swift Code : SBININBB104   |

**Note:** Please send your donation by cheque in favour of "Gram Seva Trust".  
 Send any post/mail by "Shri ANJANI via Bilimora" courier

**Imp. Note:** New FCRA Account (for foriegn donations) has been opened in State Bank of India, New Delhi Main Branch. All foriegn donors are requested to send your donations to this account only.



## Credibility Alliance Norms and Compliance report

### Identity

|  |   |   |
|--|---|---|
| Name of Trust                                | : | Gram Seva Trust   |
| Address                                      | : | At & Post Kharel, Ta.Gandevi, N.H. No.48, Dist. Navsari.<br>Pin. 396430 (Guj.) INDIA.   |
| Public Trust Reg. No.                        | : | E / 896 / Navsari. Dtd. January 1.2001<br>(Old No. E / 1487 / Valsad. Dtd.17-3-1994)  |
| FCRA No.                                     | : | 42000065  |
| Permanent Account No. (PAN)                  | : | AAATG2029D DT.05-02-1994  |
| Registered u/s 12A of the Income Tax Act No. | : | AAATG2029DE 201101 from A.Y. 2022-23 to 2026-27   |
| Income Tax Exemption u/s 80G(5) (vi) No.     | : | AAATG2029DF 20206 from Dt. 2021-22 to 2023-24   |
| Name & Address of main Bankers               | : |   |
| (i) For Indian (Local) Donation              | : | Bank of Baroda, Kharel Branch<br>A/c No. 34220100011566. IFSC Code. BARBOKHAREL<br>N.H. No.48, At. & Post. Kharel, Ta.Gandevi, Dist. Navsari - 396430.  |
| (ii) For Foreign Donation                    | : | State Bank of India, New Delhi Main Branch, FCRA Division A/c. No. 40133695833<br>IFSC Code: SBIN0000691 Swift Code: SBININBB104, New Delhi Main Branch, FCRA<br>Division 11 Parliament Street, New Delhi - 110 001 |
| Name & Address of Auditors                   | : | D.D.Desai & Associates<br>Chartered Accountant<br>G/2, Sunshine Apt., Ratanji Wadi,Opp. Bai Avabai Highschool, Valsad - 396 001, Ph. 02632-247337   |
| Website                                      | : | www.gramsevatrust.org   |

### Governance

- Board of Trustees - See Inside of Last Cover Page
- Two Trustees are related to each other.
- Board Meeting (1) 24-07-2021 (2) 24-10-2021 (3) 05-03-2022
- Accountability And Transparency
- No remuneration, sitting fees or any other form of compensation has been paid since inception of the Foundation, to any Board members or trustees.
- Managing trustee Dr. Ashwin Shah & trustee Dr. Harsha Shah are giving honorary services to the organization
- Highest salary ₹. 155000 + Incentives
- Lowest salary ₹. 8365

### Distribution Of Staff According To Salary

| Slab of gross salary (in Es.)<br>plus benefit paid to staff | Male | Female | Total |
|---|------|--------|-------|
| 8000 to 10000 (Part time)                                   | 0    | 03     | 03    |
|   | 12   | 32     | 44    |
| 10001 to 25000  | 22   | 42     | 64    |
| > 25000   | 05   | 04     | 09    |
| Total   | 39   | 81     | 120   |

Total cost of National Travel by all staff during the year: Nil



The Organization has been accredited by Credibility Alliance (A consortium of voluntary organization committed towards enhancing accountability and transparency in voluntary sector) and the Certificate No is CA/01/2020

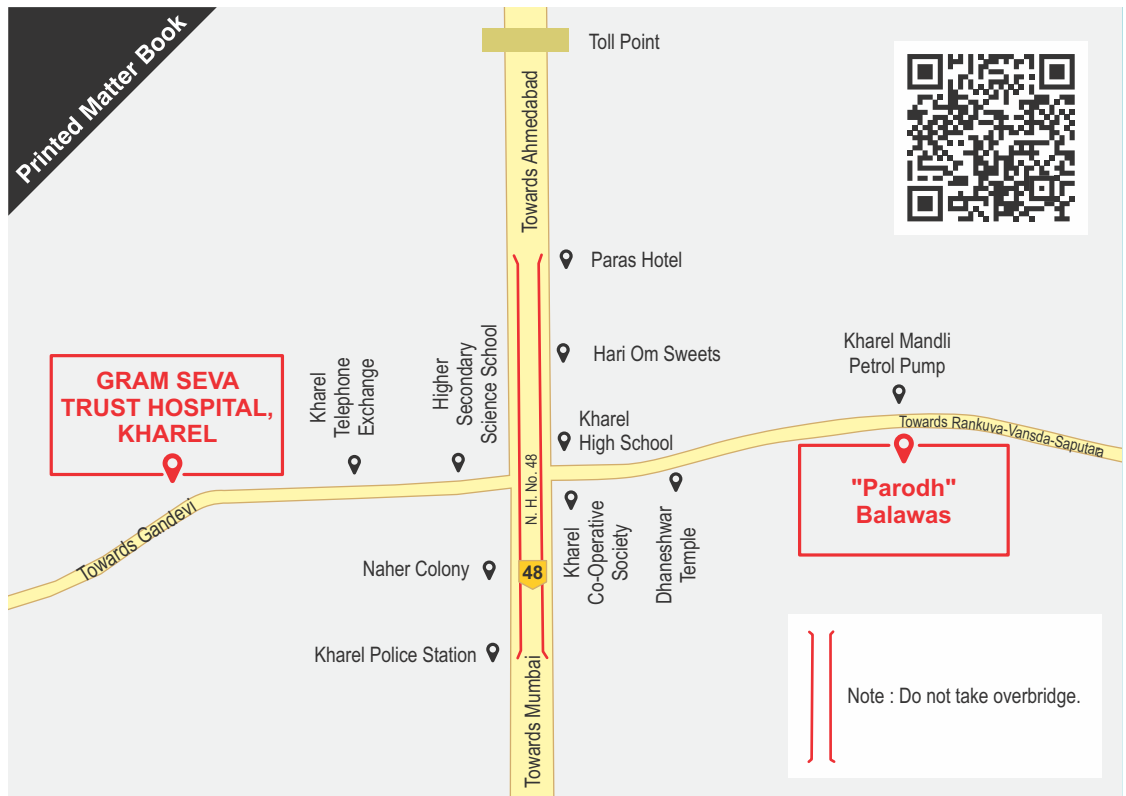
## Governing Board Members

| No. | Name                  | Position in Board | Address    |
|-----|-----------------------|-------------------|------------|
| 1   | Dr. Ashwin A. Shah    | Managing Trustee  | Kharel     |
| 3   | Dr. Harsha A. Shah    | Trustee           | Kharel     |
| 4   | Mr. Dipakbhai A Vashi | Trustee           | Dhamdachha |
| 5   | Mr. Dinubhai R. Patel | Trustee           | Khaparia   |
| 6   | Dr. Khushroo Patel    | Trustee           | USA        |
| 7   | Dr. Sharmishtha Patil | Trustee           | Kharel     |
| 8   | Dr. Kanchan Dhadve    | Trustee           | Kharel     |

## Advisors

|                          |        |
|--------------------------|--------|
| Shri Dhananjaybhai Desai | Valsad |
|--------------------------|--------|





To,

From :  
**Dr. Ashwin Shah**  
(Managing Trustee)



## GRAM SEVA TRUST

N. H. No. 48, Kharel, Ta. Gandevi, Dist. Navsari - 396 430  
Phone : +91 2634 246248, +91 2634 246362, +91 76980 05915  
E-Mail : gram\_seva@yahoo.com | gstkharrel@yahoo.com  
Website : gramsevatrust.org | gramseva.org